

Enhancing and protecting our native species in Kaitoke

Greater Wellington Regional Council is working to eradicate a wallaby population discovered recently in the Kaitoke area. Wallabies cause significant damage to native forests, and this work is being done to protect native species (see attached map). Possums will also be controlled as part of this work, which will take place from 8 November 2021.

Why is it being done?

Wallabies are capable of causing significant adverse environmental effects, including preventing the regeneration of native bush and depleting forest understorey, with possible impacts on water quality.

Area

We will be using a number of different methods to control and eradicate both wallabies and possums in the area outlined in the attached map.

There is a mixture of private land with no public access, and Pakuratahi Forest which contains the Pylon Track which can be publically accessed from Remutaka Pass or Featherston, or through private land at Kaitoke.

Control methods

Feratox (Potassium Cyanide) is the trade name for an encapsulated form of cyanide that is used for possum and wallaby control in New Zealand. Encapsulated cyanide pellets (Feratox) will be dispensed to possums and wallabies from a variety of bait stations inside a non-toxic feed paste. Some bait stations may be stapled to trees. Feratox bait is toxic to people and dogs, but the carcasses of poisoned animals are not.

Brodifacoum cereal possum bait will also be used for possums. Brodifacoum, coloured blue, will be placed in bait stations. Dogs should not be allowed access to brodifacoum bait or dead carcasses. Feral animals should not be taken for human consumption in areas where brodifacoum is used.

Traps will also be used to kill possums. AT220 traps are automatic setting traps. There is an extreme risk of serious injury if hands are placed up inside a set trap.

Safety Information

Feratox and brodifacoum pose a low risk when used correctly, but to ensure you and your pets and family stay safe, you should follow these precautions carefully.

- Warning signs will be posted at the entrances to the operational area prior to work being undertaken and while bait is active.
- Keep dogs under control, away from baits and bait stations.
- Do not allow dogs to scavenge carcasses.
- Do not touch bait, bait stations, traps, or dead carcasses.
- Do not take feral animals from this area for consumption until warning signs have been removed.

Prevention is the only sure way of protecting animals and pets from poisoning. If you suspect your dog has been poisoned, take it to the nearest vet immediately.

For enquiries relating to this operation contact:

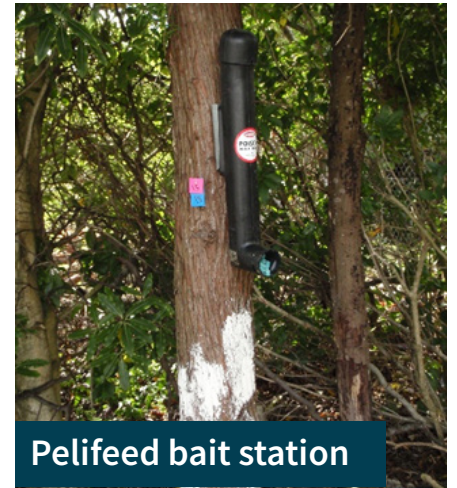
Reuben Harland - Senior Biosecurity Officer
Greater Wellington Regional Council
1056 Fergusson Drive, Upper Hutt
Ph: 0800 496 734
Email: Reuben.Harland@gw.govt.nz



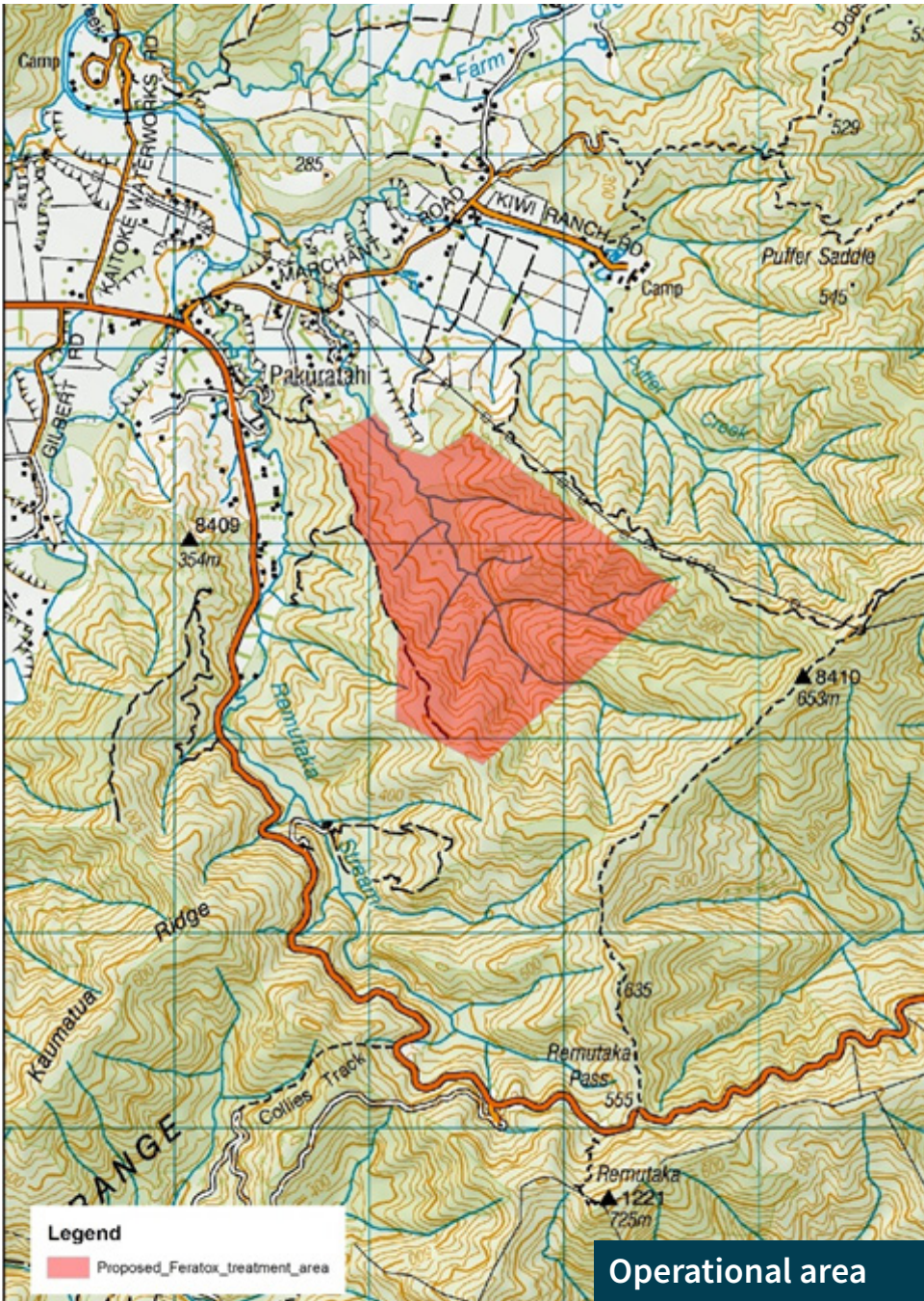
Brodifacoum



Feratox



Pelifed bait station



Operational area



AT220 trap



Feratox bait station

FURTHER INFORMATION

Find out more about Feratox - www.gw.govt.nz/feratox/

Find out more about brodifacoum - www.gw.govt.nz/brodifacoum/