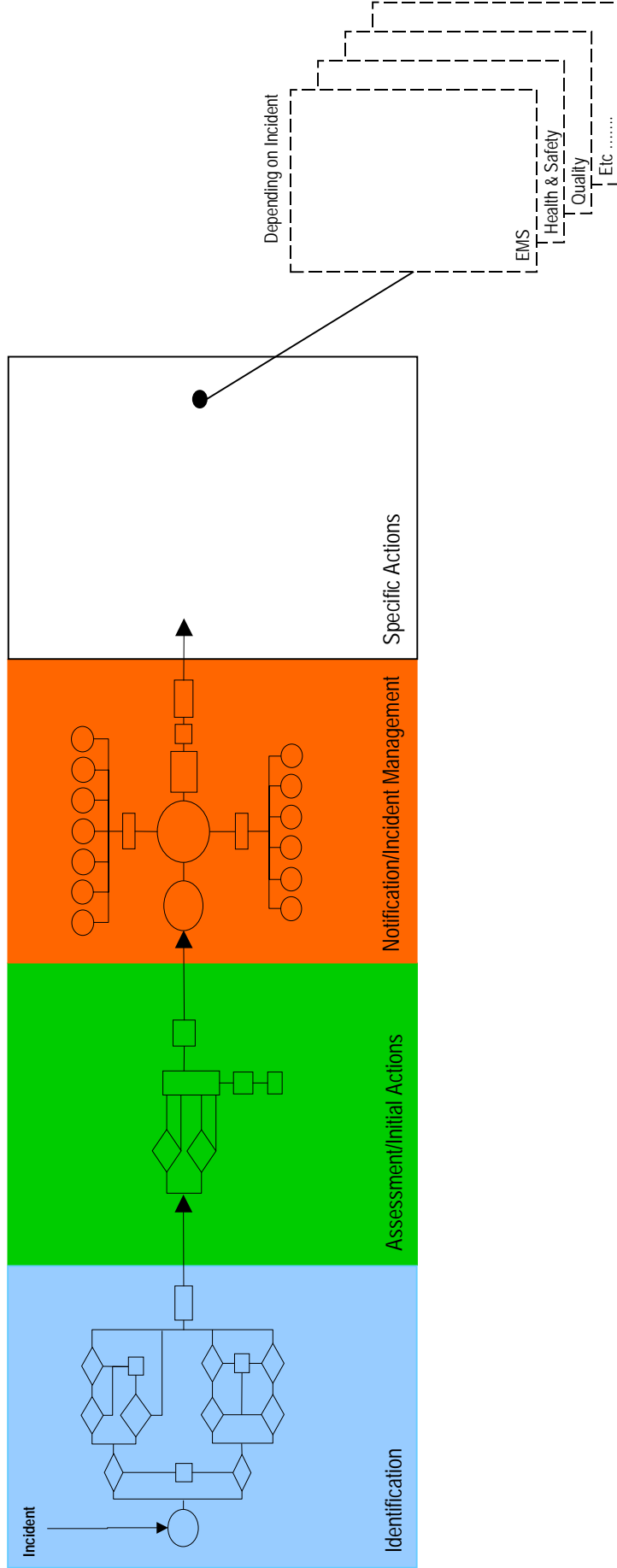
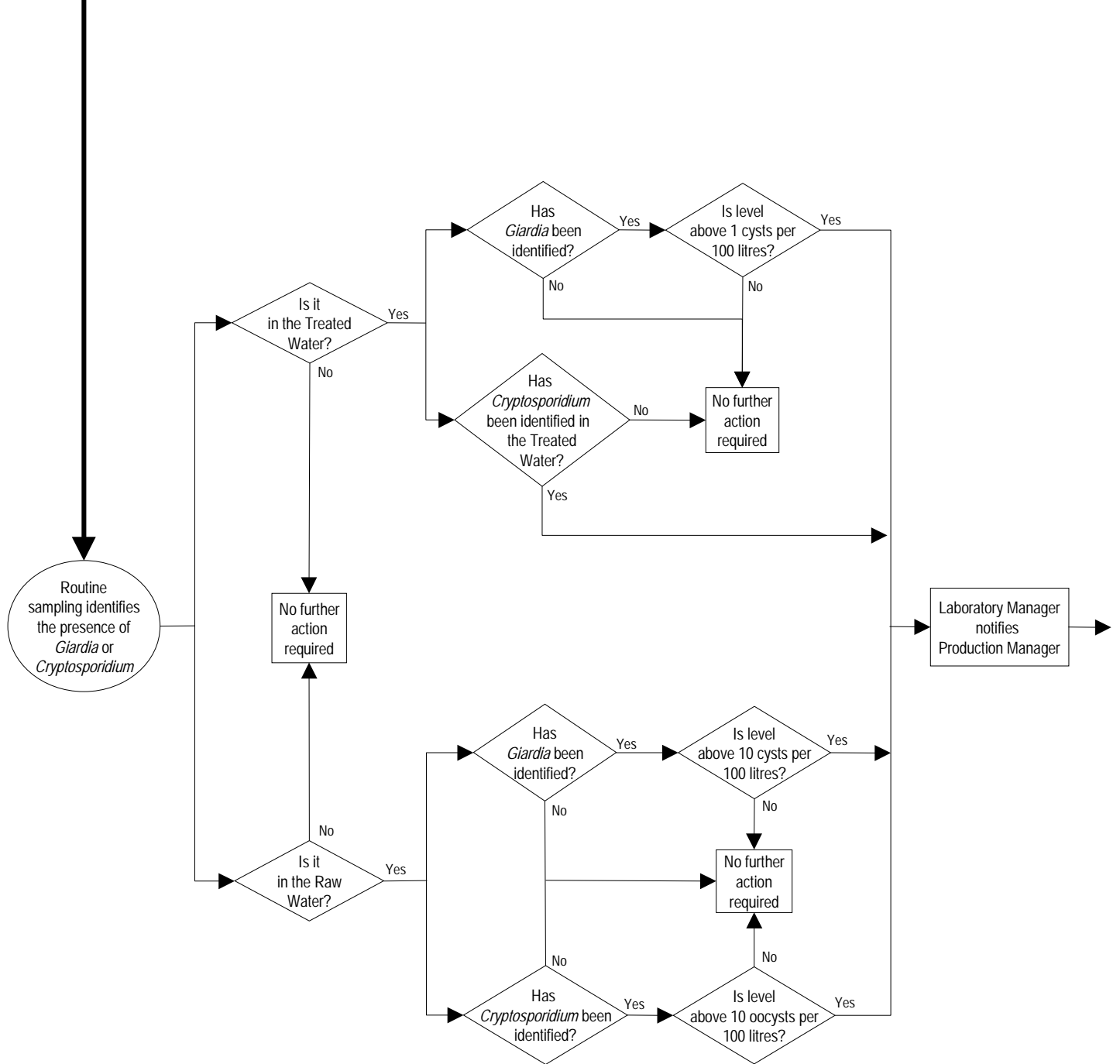


Example of how each page inter-links and how the flow chart on each page follows on



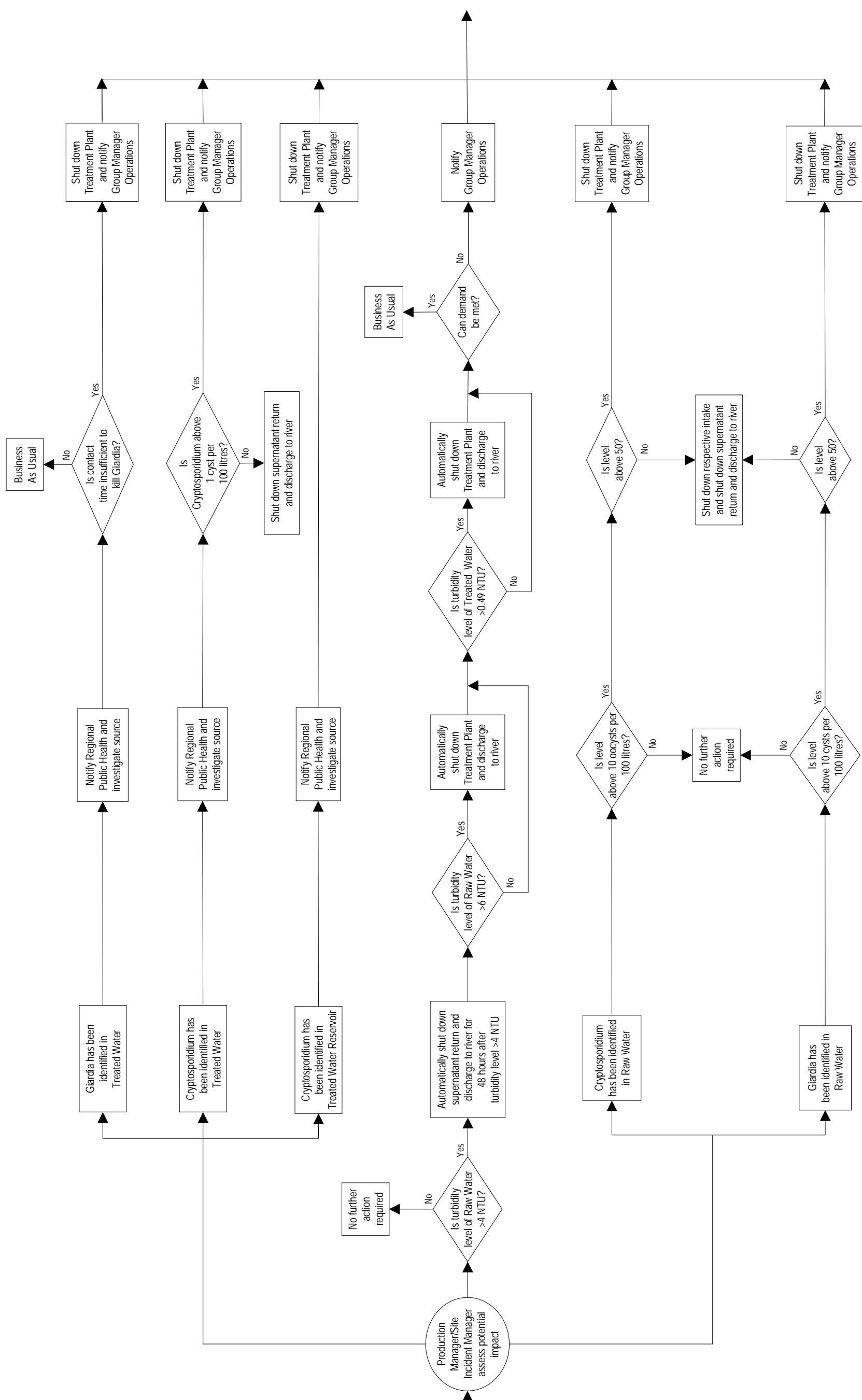
**SAMPLE FLOW CHART**  
**(One of 7 flow charts contained within the IMS)**

# Detection of *Giardia* / *Cryptosporidium*



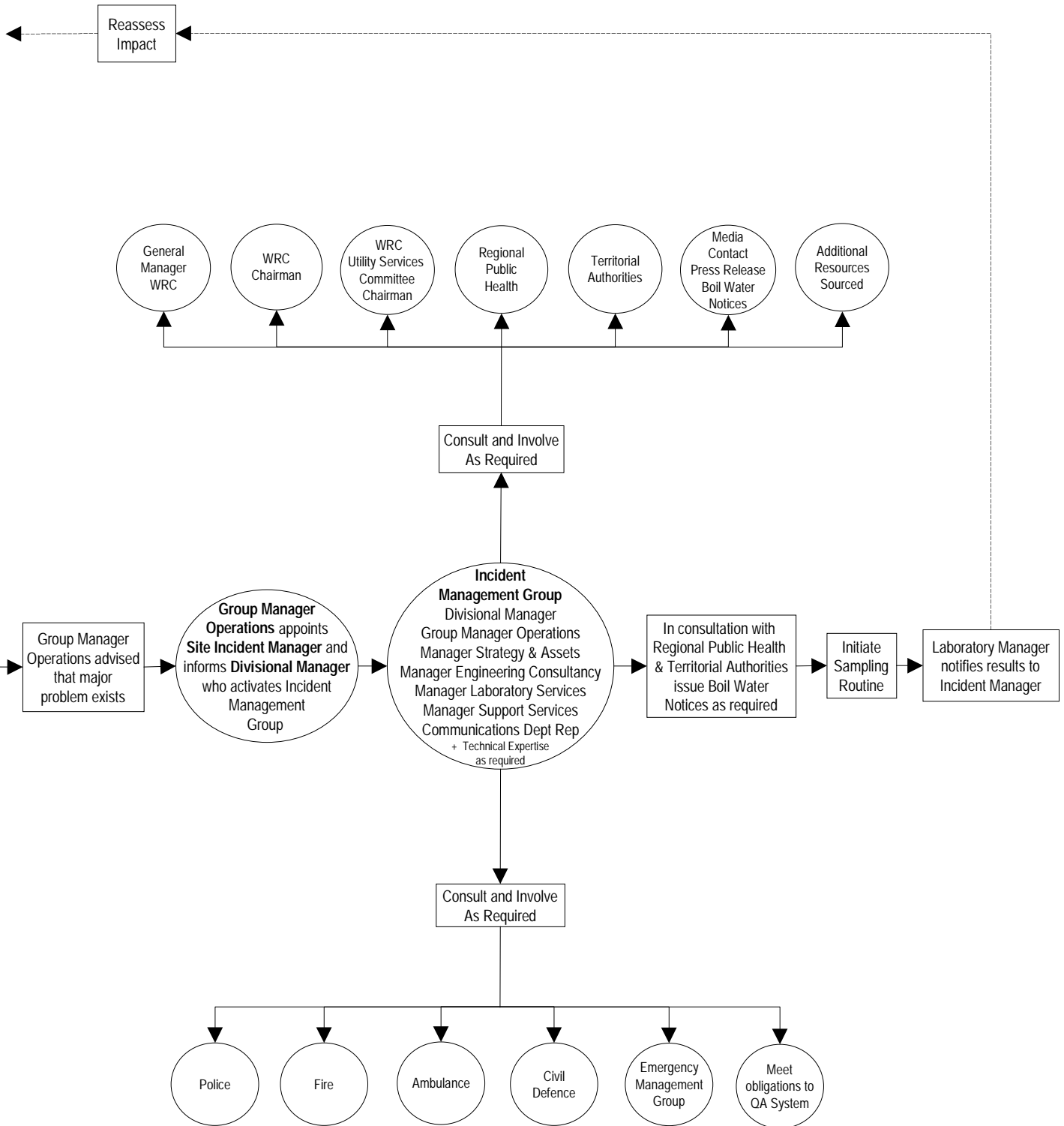
## Identification

**Detection of Giardia / Cryptosporidium**



**Assessment/Initial Action**

# Detection of *Giardia* / *Cryptosporidium*



## Notification/Incident Management

Refer to relevant site or incident specific procedures as detailed within:

- Utility Services Division Health and Safety Plan
- Environmental Management Procedures
- Quality Procedures
- NZ Drinking-Water Standards 2000
- Te Marua Lakes Emergency Action Plan
- Orongorongo Railway Safety System