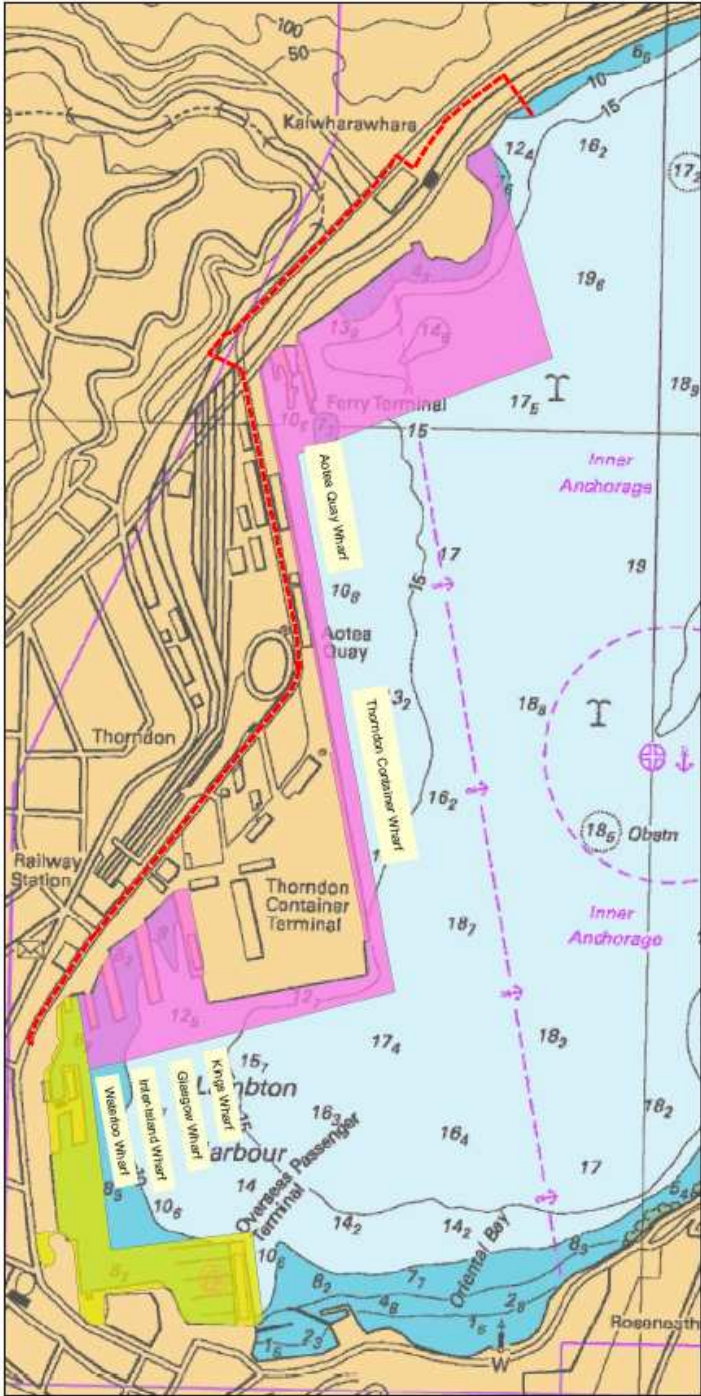


# Lambton Harbour Development and Commercial Port Areas

Lambton Harbour

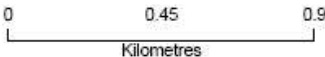


N



### Legend

- Port noise control line
- Commercial port area (within the CMA)
- Lambton Harbour development area (within the CMA)



### Note :

Shoreline details may not be accurate at this scale. All distances in metres.

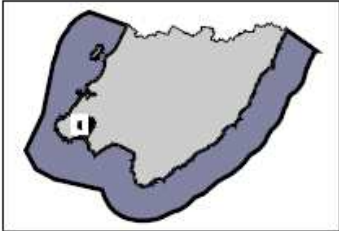
The landward boundary of the coastal marine area is the line of mean high water springs.

### CAUTION

NOT TO BE USED FOR NAVIGATION

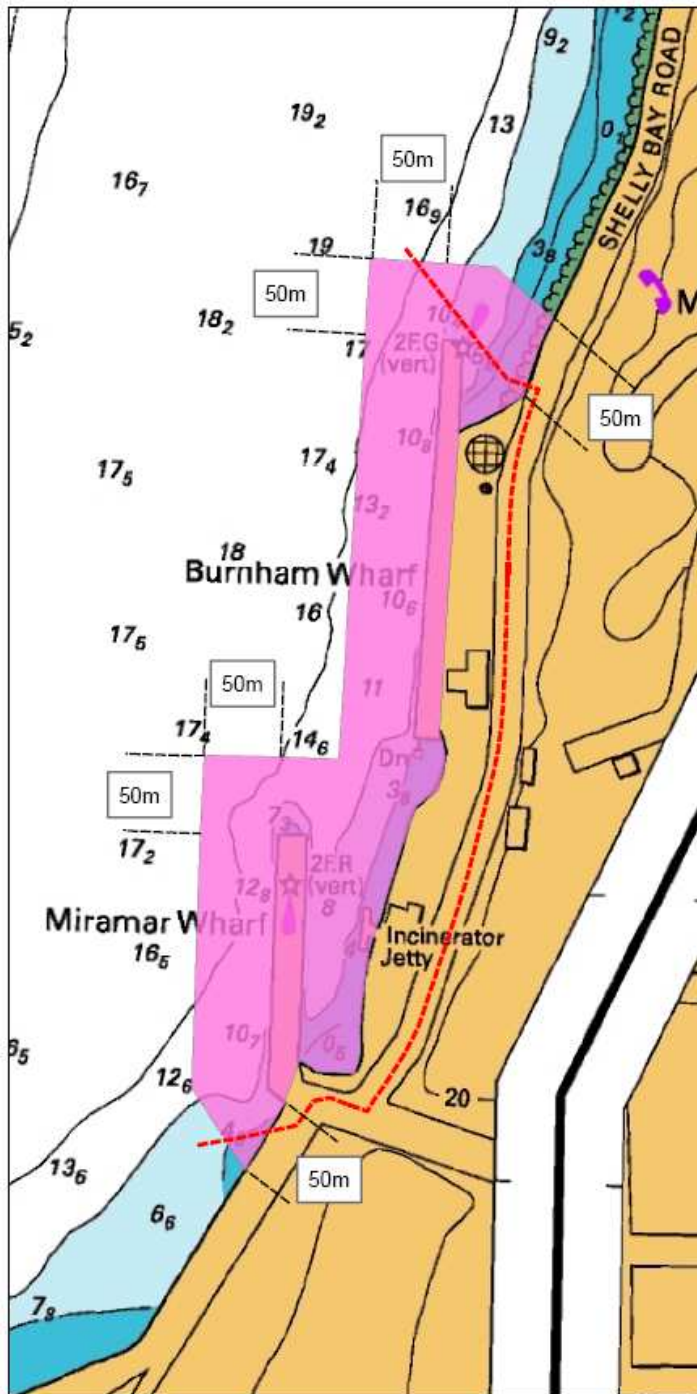
Part of Chart NZ 4633 Wellington Harbour reproduced by permission of Land Information New Zealand.

### Locality Map



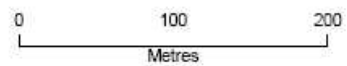
# Commercial Port Areas

## Miramar and Burnham Wharves



**Legend**

- Port noise control line
- Commercial port area (within the CMA)



**Note :**

Shoreline details may not be accurate at this scale. All distances in metres.

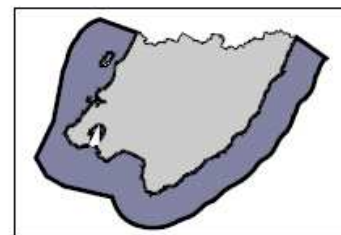
The landward boundary of the coastal marine area is the line of mean high water springs.

**CAUTION**

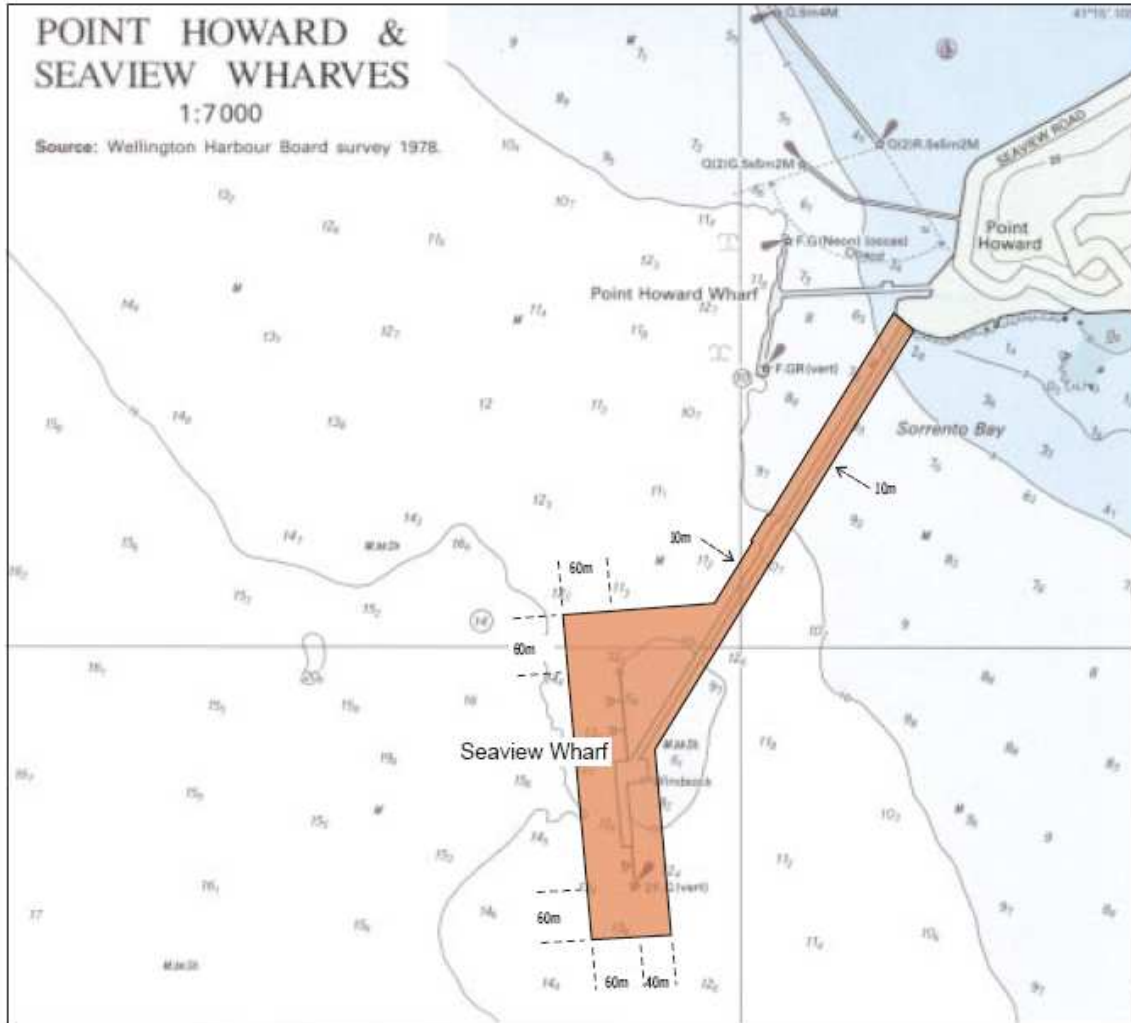
NOT TO BE USED FOR NAVIGATION

Part of Chart NZ 4634 Wellington Harbour reproduced by permission of Land Information New Zealand.


**Locality Map**



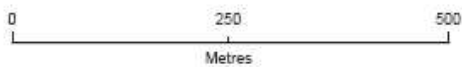
# Commercial Port Area Seaview Wharf



### Legend

 Commercial port area

Note: Shoreline details may not be accurate at this scale  
All distances in metres



Part of Chart NZ 4634 Wellington Harbour Entrance and Plans of Wharves - Point Howard and Seaview Wharves reproduced by permission of Land Information New Zealand



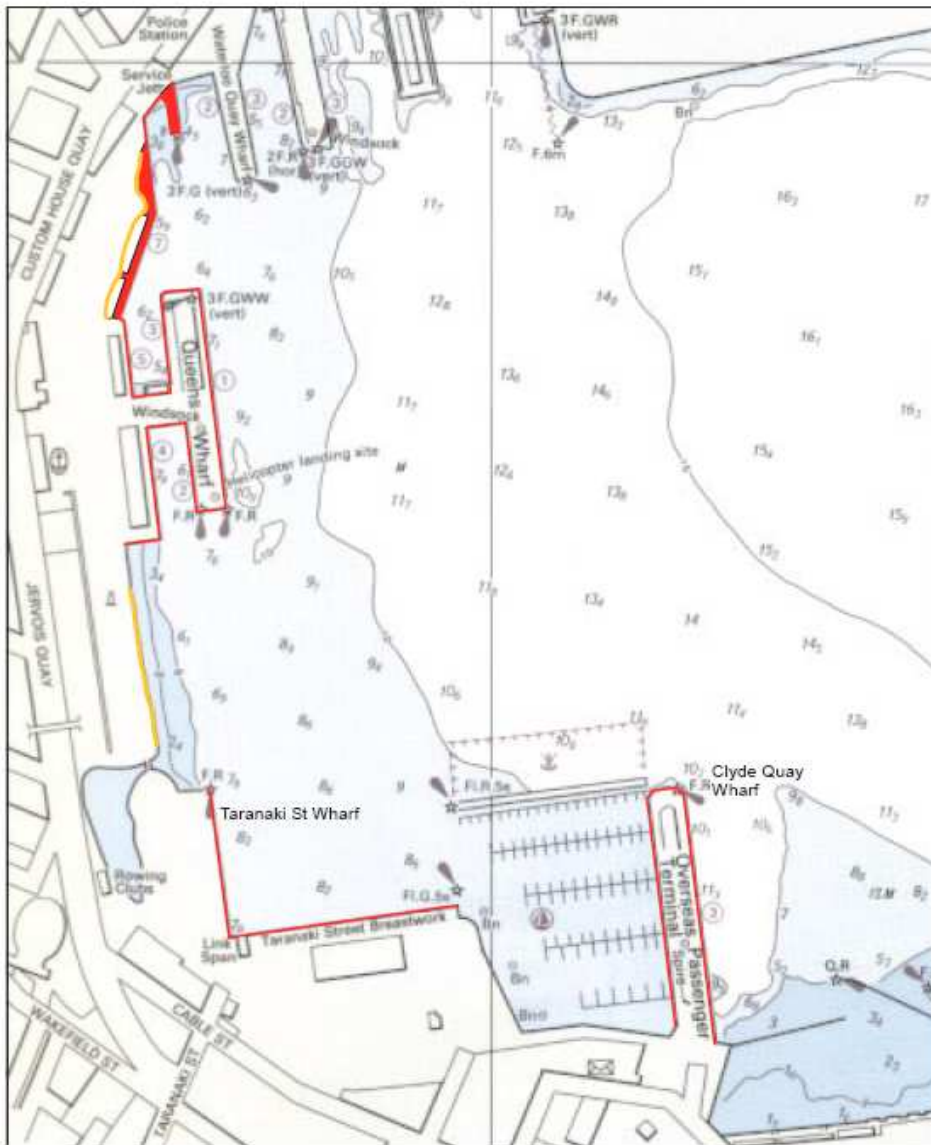
CAUTION  
NOT TO BE  
USED FOR  
NAVIGATION



### Locality Map



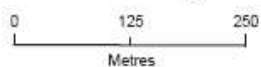
# Protected Wharf and Reclamation Lambton Harbour Development Area



### Legend

- Protected wharf and wharf edge
- Protected reclamation edge

The landward boundary of the coastal marine area is the line of mean high water springs.



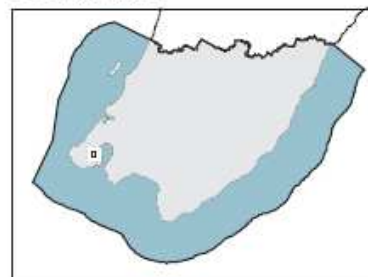
Part of Chart NZ 4634 Wellington Harbour Entrance and Plans of Wharves - Lambton Harbour reproduced by permission of Land Information New Zealand



CAUTION  
NOT TO BE  
USED FOR  
NAVIGATION



### Locality Map



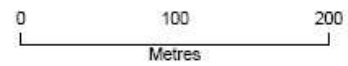
# Lambton Harbour Development and Commercial Port Areas

Main Port - Southern Area



### Legend

- Port noise control line
- Commercial port area (within the CMA)
- Lambton Harbour Development Area north of Johnston St (within the CMA)



### Note :

Shoreline details may not be accurate at this scale. All distances in metres.

The landward boundary of the coastal marine area is the line of mean high water springs.

### CAUTION

NOT TO BE USED FOR NAVIGATION

Aerial photography reproduced by permission of WCC.

### Locality Map

