



KNE rodent monitoring report

April 2008



FOR FURTHER INFORMATION

Greater Wellington
Regional Council
Upper Hutt
PO Box 40847

T 04 526 4133
F 04 526 4171
W www.aw.govt.nz

Greater Wellington
Regional Council
Masterton
PO Box 41

T 06 378 2484
F 06 378 7994
W www.aw.govt.nz

Publication Date August 2008
Publication No. GW/BIO-G-08/136

Photo Crown copyright Department of Conservation 1982

Contents

1.	Monitoring results	5
2.	Comparison with previous monitor	5
3.	Comparison with last year	5
4.	Individual line results	5
5.	Supply of monitoring data - Terms and Conditions	7
6.	Monitoring maps – April 2008	8

1. Monitoring results

Date of Monitor:	April 2008		
Overall rat tracking rate:	19.4 %	+/- 10.0 %	Se 5.0 %
Overall mouse tracking rate:	23.2 %	+/- 5.2 %	Se 2.6 %

Secondary monitoring results of other species:

Possums	Detected on 10 tunnels in Long Gully
Mustelids	Nil
Hedgehogs	Detected in three reserves Wi Tako, Johnsonville Park, and Tauherenikau

2. Comparison with previous monitor

A rat tracking index of 17.2% +/- 10.4% (95% CI) was recorded for the January 2008 monitor.

A mouse tracking index of 10.3 % +/- 5.0 (95% CI) was recorded for the January 2008 monitor.

3. Comparison with last year

A rat tracking index of 15.0 % +/- 5.8 (95% CI) was recorded for the April 2007 monitor.

A mouse tracking index of 23.0 % +/- 4.1 % (95% CI) was recorded for the April 2007 monitor.

4. Individual line results

Table 1 shows individual rat and mouse tracking indices in each KNE. Each reserve has between one to four lines of 10 tunnels each.

The attached maps show individual line results for each park.

Table 1: April 2008 rodent monitoring results for each KNE

KNE	Number of lines	Rat tracking Rate (%)	+/-	SE	Mouse tracking rate (%)	+/-	SE	Mustelids Present	Hedgehogs present
Pounui	4	57.50%	54.79%	19.74%	15.00%	24.04%	8.66%	NO	NO
Fensham	2	10.00%	43.03%	10.00%	20.00%	86.06%	20.00%	NO	NO
Wi Tako	3	3.33%	10.61%	3.33%	13.33%	21.21%	6.67%	NO	YES
Keith George	3	6.67%	10.61%	3.33%	43.33%	10.61%	3.33%	NO	NO
Haywards	3	66.67%	106.07%	33.33%	13.33%	28.06%	8.82%	NO	NO
Wrights Hill	3	0.00%	0.00%	0.00%	48.52%	29.74%	9.35%	NO	NO
Johnsonville Park	2	0.00%	0.00%	0.00%	20.56%	40.64%	9.44%	NO	YES
Porirua Scenic	3	0.00%	0.00%	0.00%	17.41%	11.96%	3.76%	NO	NO
Long Gully	2	10.00%	0.00%	0.00%	30.00%	0.00%	0.00%	NO	NO
Tauherenikau	1	40.00%			10.00%			NO	YES
Total Lines	26								
		Overall rat tracking rate (%)		19.42%					
		+/- se		9.99% 4.99%					
		Overall Mouse tracking rate (%)		23.15%					
		+/- se		5.20% 2.60%					

5. Supply of monitoring data - Terms and Conditions

The enclosed information is supplied, within the framework of Greater Wellington's data quality system, from the best practice currently available. Greater Wellington has exercised all reasonable skill and care in controlling the contents of the information.

As we endeavour to continuously improve our service, we may amend the data on which this information is based, where necessary and without notice, at any time.

Under no circumstances will Greater Wellington or its employees or agents be liable in contract or otherwise to compensate you for any loss, injury or damage (including loss of profits or consequential loss) arising directly or indirectly from the supply by Greater Wellington or its agents of inadequate, inaccurate or incorrect monitoring information.

Any use of the material supplied, for example, by inclusion in a report or media release, should be accompanied by an acknowledgement of the source of the data.

Your acceptance of the enclosed material and/or services signifies your acceptance of these terms and conditions.

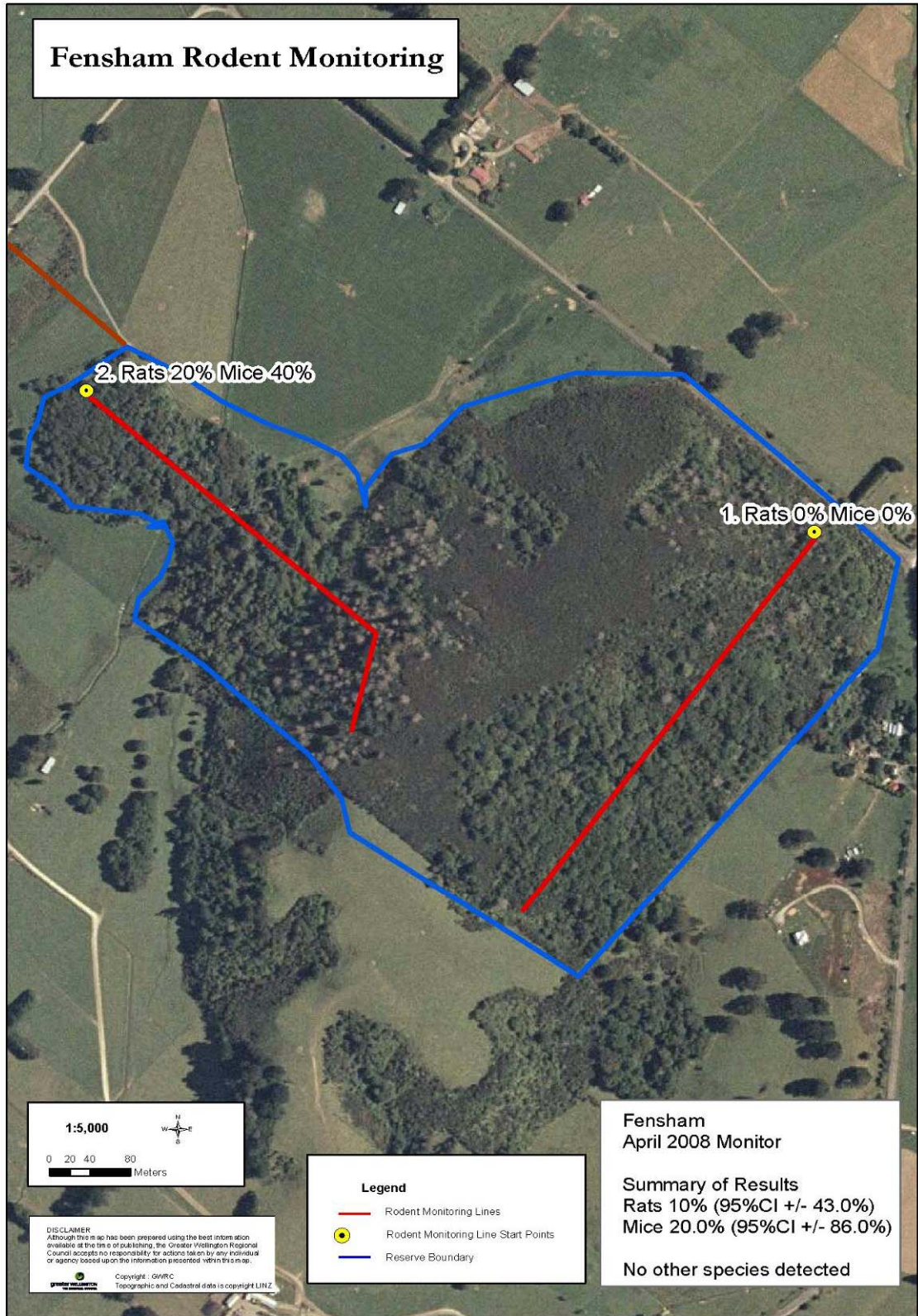
Report Prepared by:



Sara Moylan
Biosecurity Officer (Investigations)

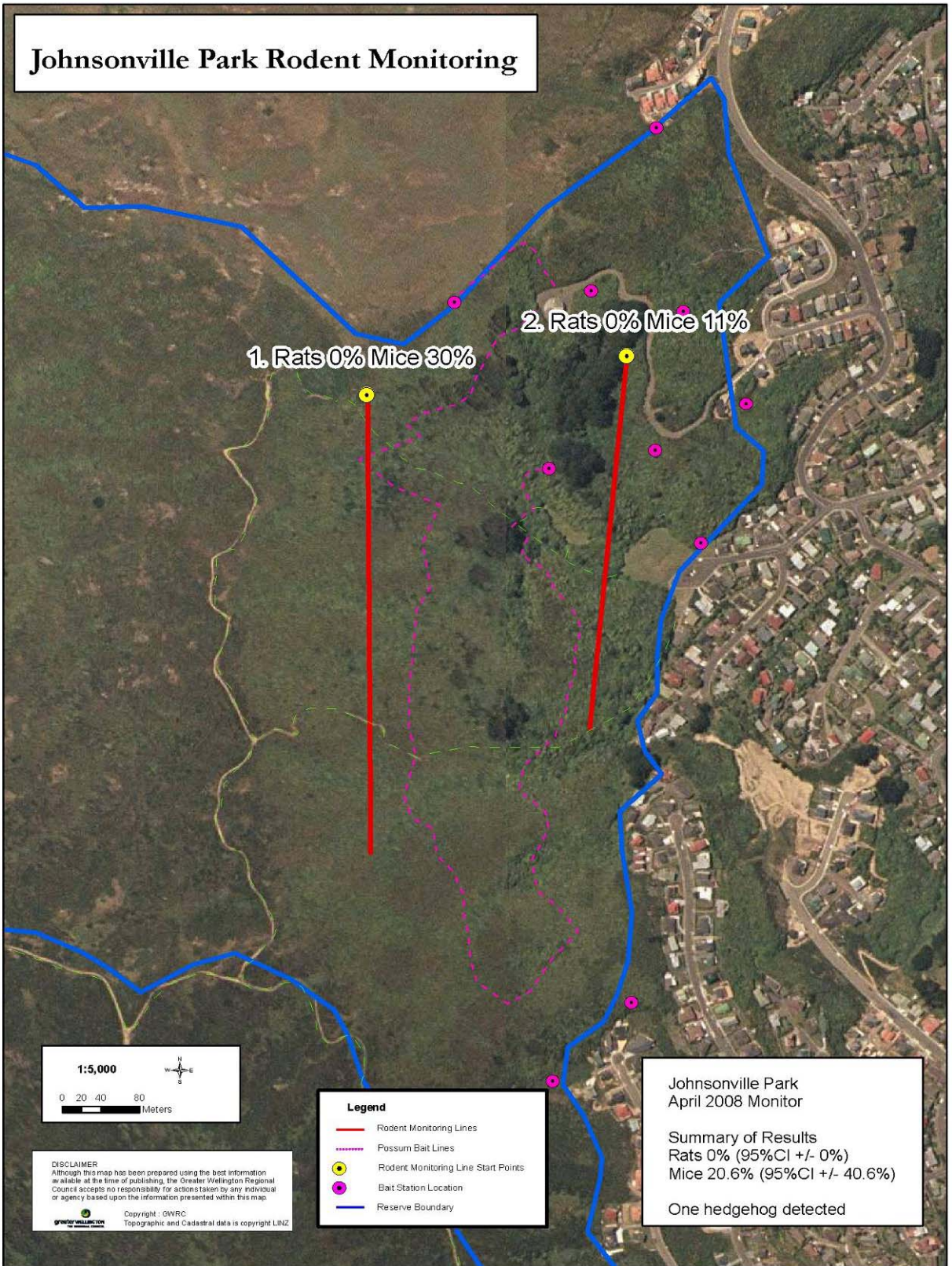
Date: 9 May 2008

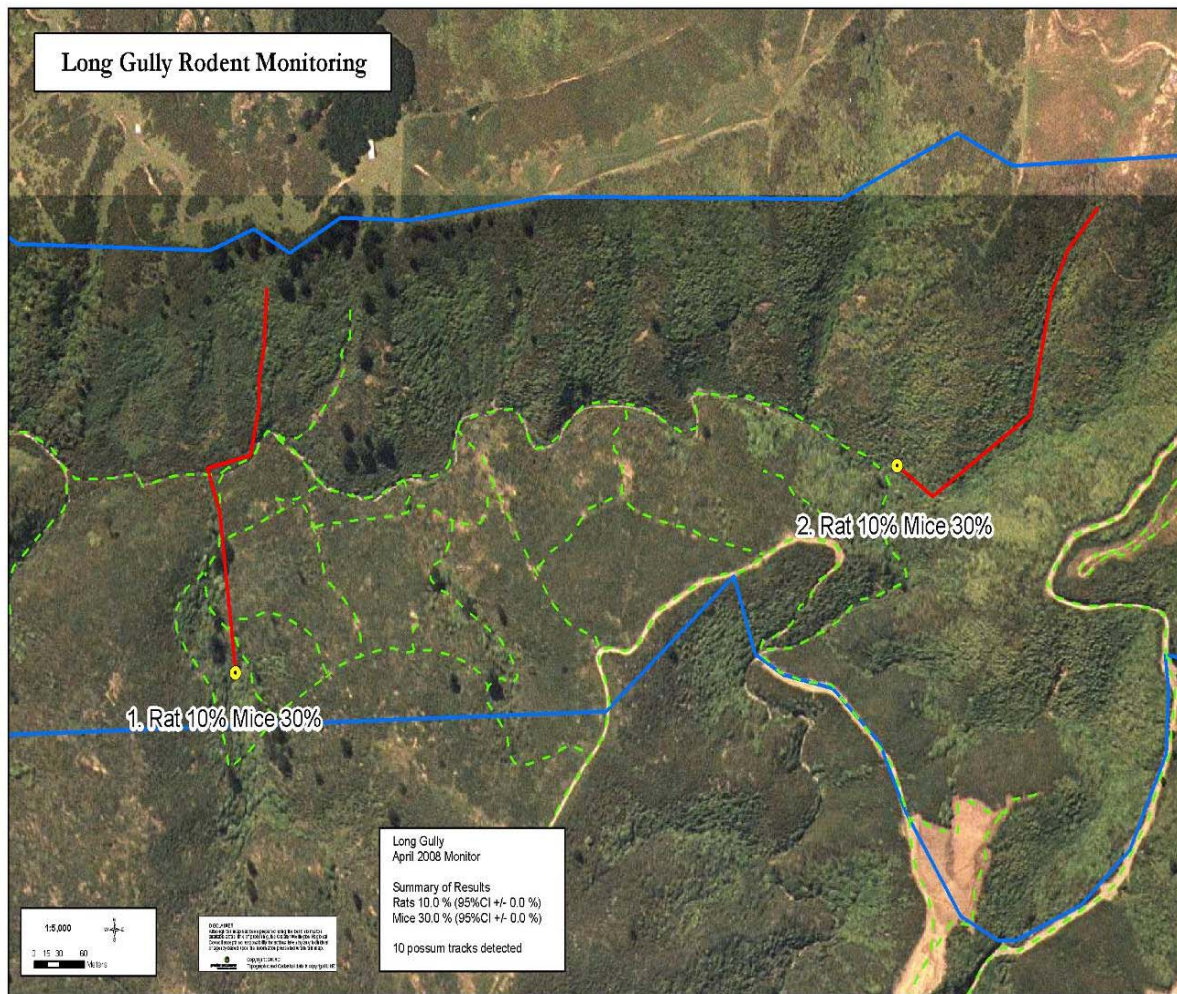
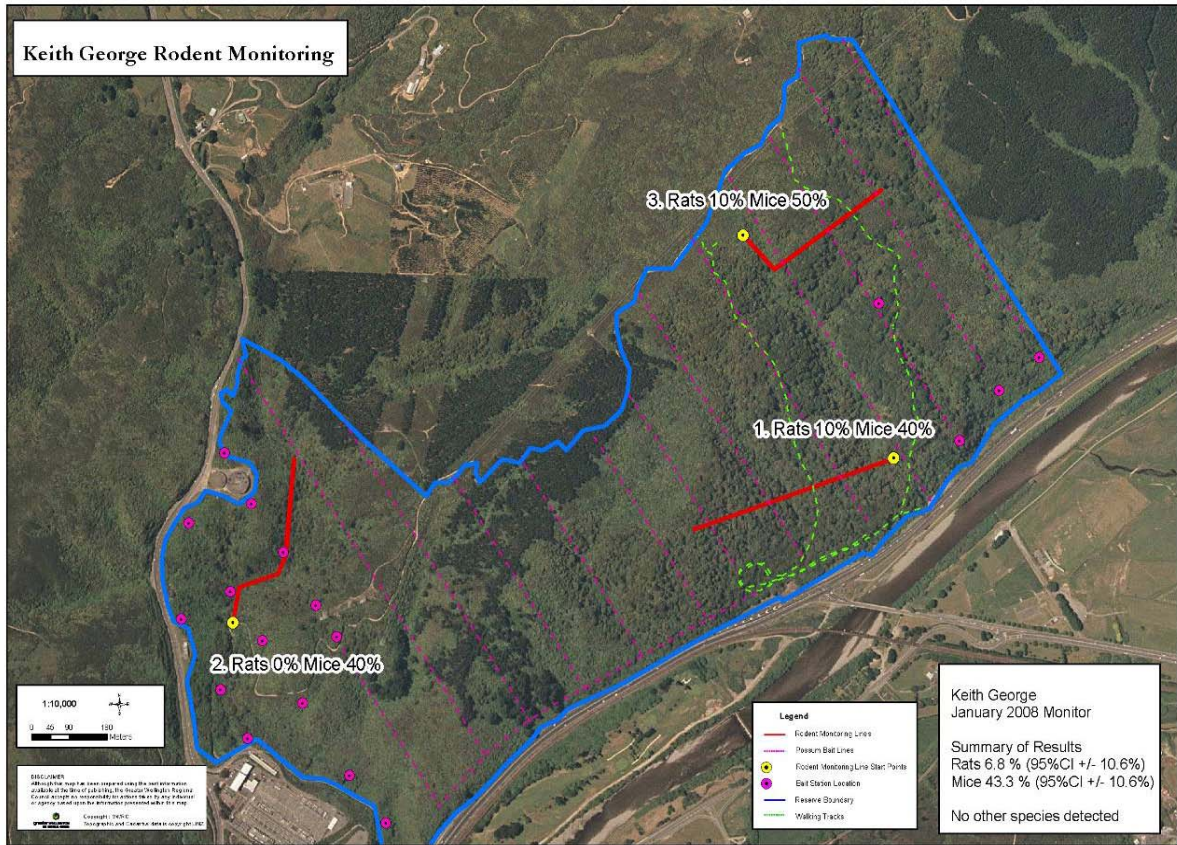
6. Monitoring maps – April 2008



Haywards Rodent Monitor



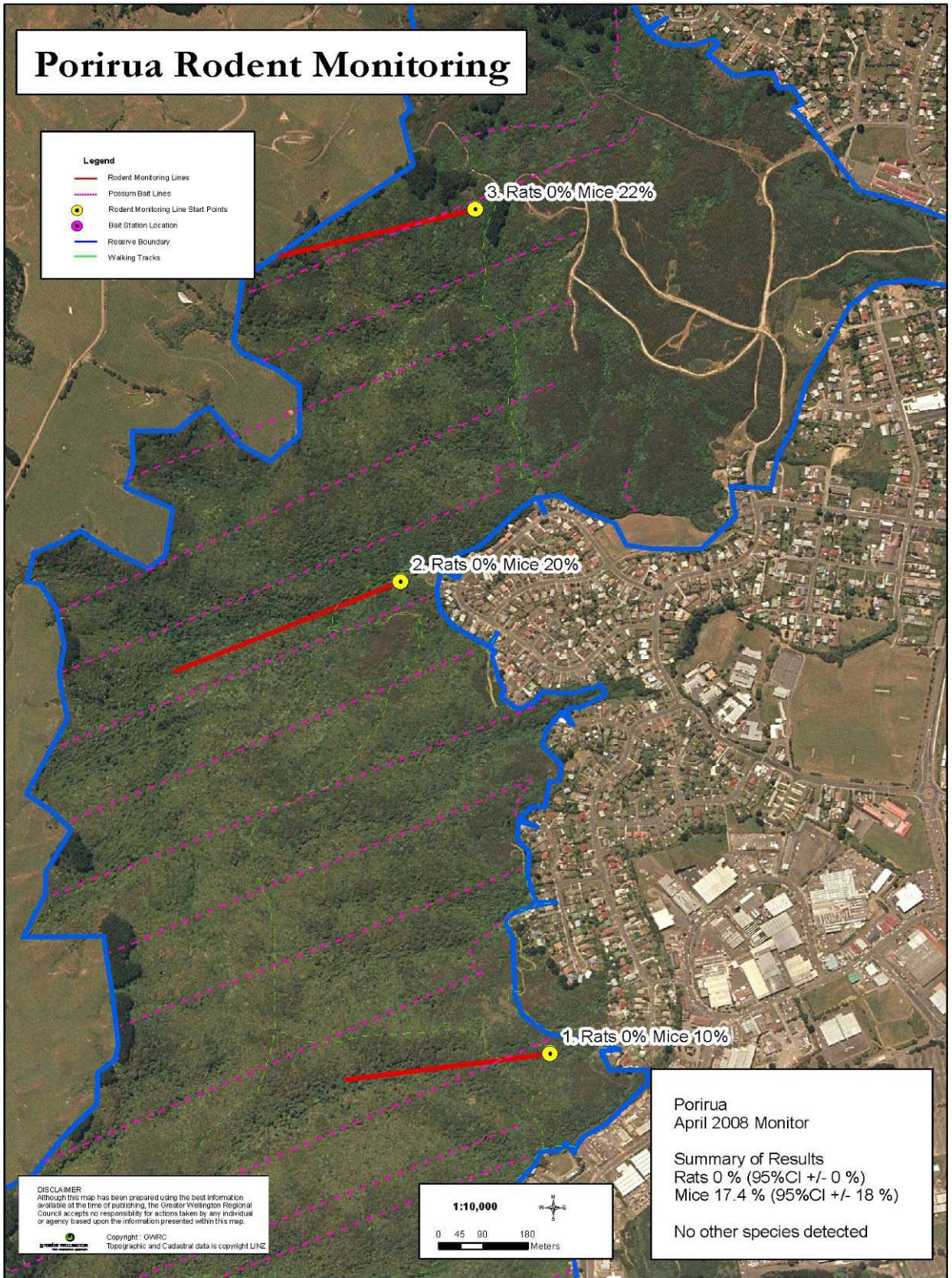




Porirua Rodent Monitoring

Legend

- Rodent Monitoring Lines
- - - Possum/Bat Lines
- Rodent Monitoring Line Start Points
- Batt Station Location
- Reserve Boundary
- Walking Tracks



3. Rats 0% Mice 22%

2. Rats 0% Mice 20%

1. Rats 0% Mice 10%

DISCLAIMER
 Although this map has been prepared using the best information available at the time of publishing, the Greater Wellington Regional Council accepts no responsibility for actions taken by any individual or agency based upon the information presented within this map.

Copyright - GWIRC
 Topographic and Cadastral data is copyright LINZ

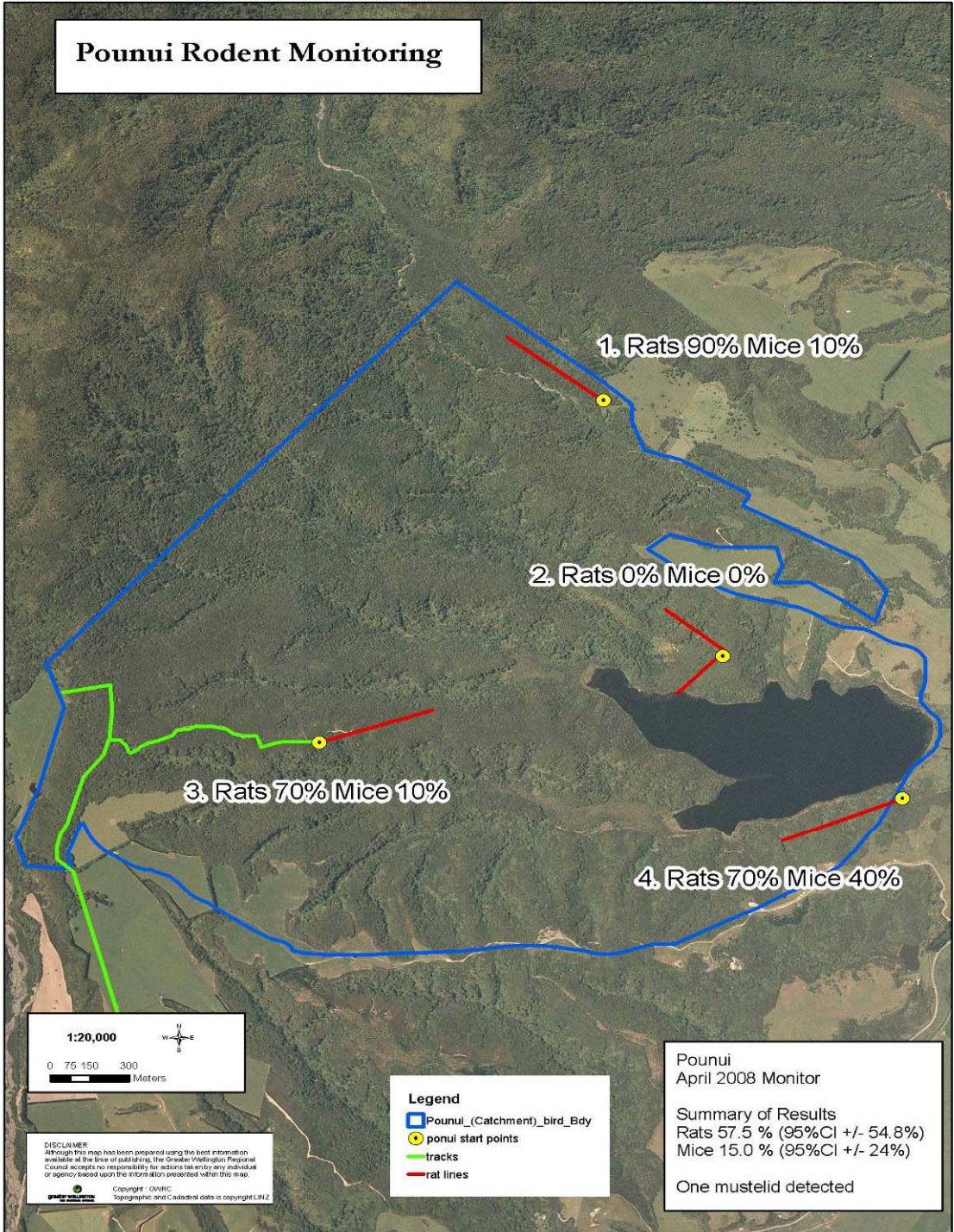


Porirua
 April 2008 Monitor

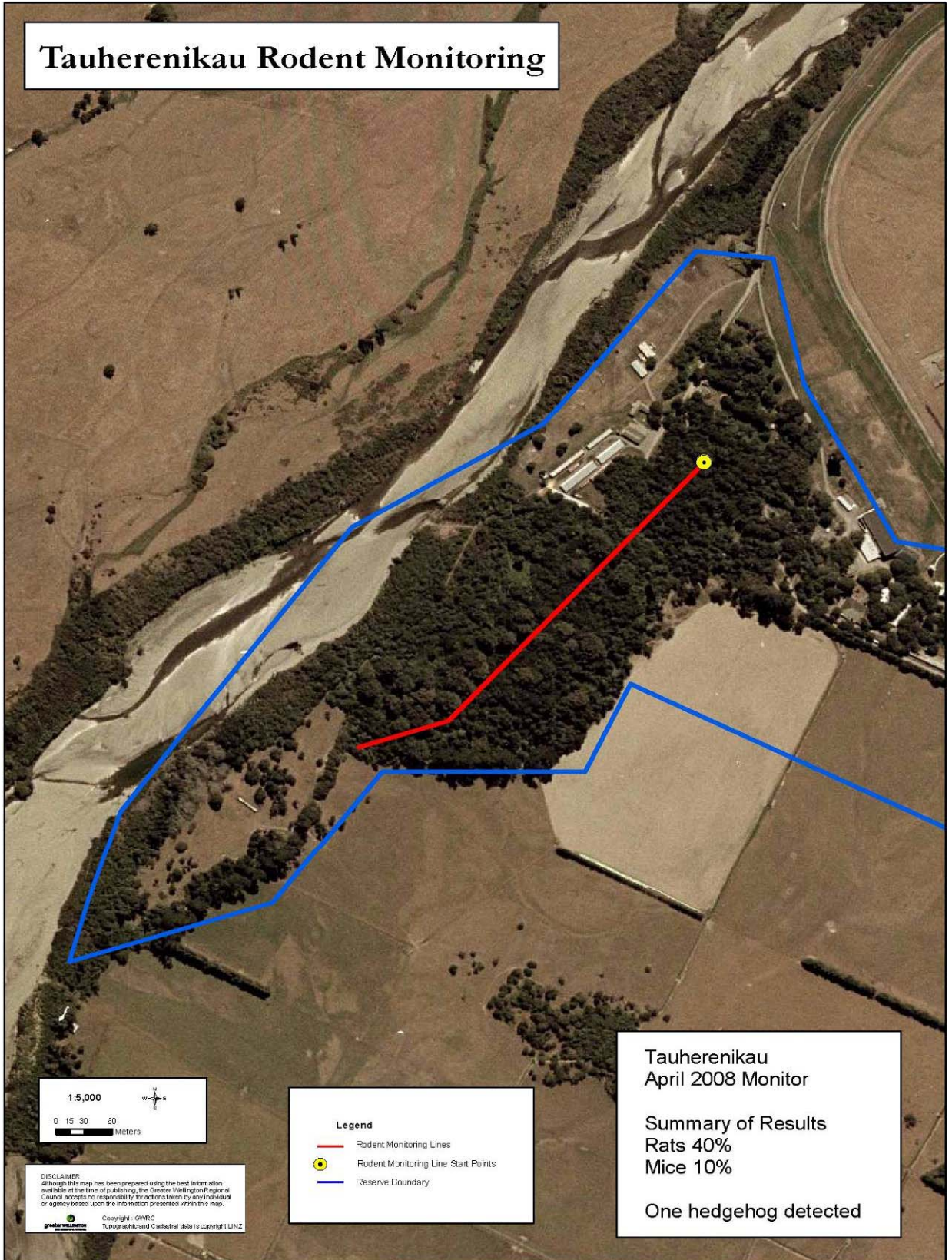
Summary of Results
 Rats 0 % (95%CI +/- 0 %)
 Mice 17.4 % (95%CI +/- 18 %)

No other species detected

Pounui Rodent Monitoring



Tauherenikau Rodent Monitoring



Wi Tako Rodent Monitoring

1:10,000

0 37.5 75 150
Meters

Witako
April 2008 Monitor

Summary of Results
Rats 3.3 % (95%CI +/- 10.6%)
Mice 13.3% (95%CI +/- 21.2 %)

Two hedgehog detected

Legend

- Rodent Monitoring Lines
- - - Possum Bait Lines
- Rodent Monitoring Line Start Points
- Bat Station Location
- Reserve Boundary
- Walking Tracks

DISCLAIMER
Although this map has been prepared using the best information available at the time of publishing, the Greater Wellington Regional Council accepts no responsibility for actions taken by any individual or agency based upon the information presented within this map.

Copyright: GWRC
Topographic and Cadastral data is copyright LINZ

1 Rat 0% Mice 20%

2 Rat 10% Mice 20%

3 Rat 0% Mice 0%

Wrights Hill Monitoring

