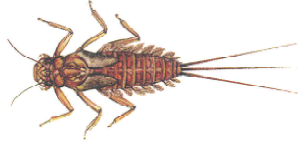


# Critter Identification Card

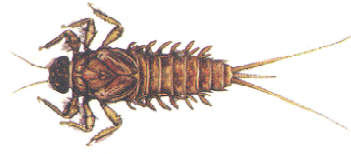


greater WELLINGTON  
THE REGIONAL COUNCIL

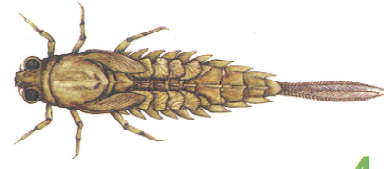
Mayflies



4



4

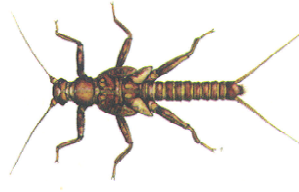


4

Large Stoneflies



4



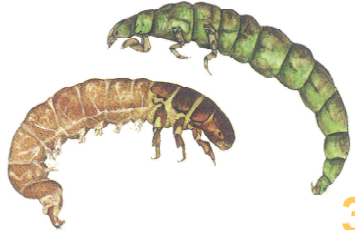
4

Small Stoneflies



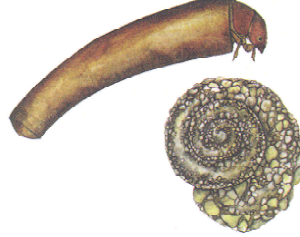
2

Uncased Caddis



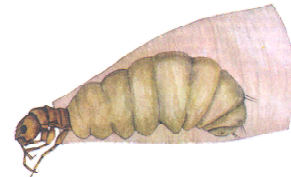
3

Cased Caddis



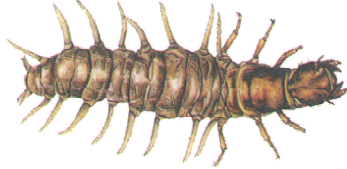
3

Purse Caddis



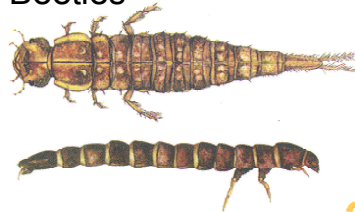
1

Dobsonfly



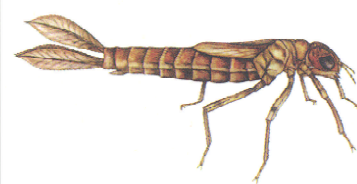
3

Beetles



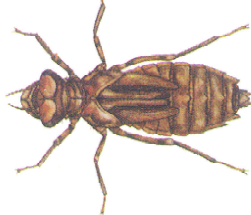
2

Damselflies



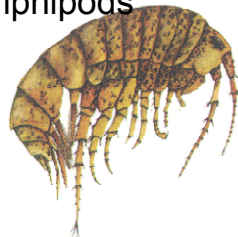
2

Dragonflies



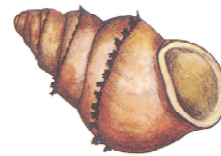
2

Amphipods



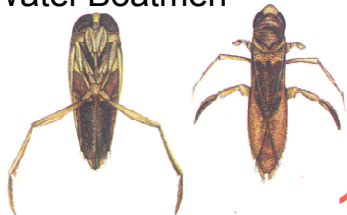
2

Snails



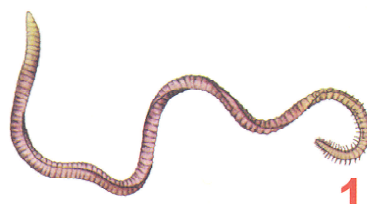
1

Water Boatmen



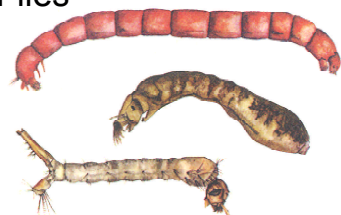
1

Worms



1

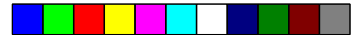
Flies



1

Illustrations reproduced with kind permission of Karen Mason



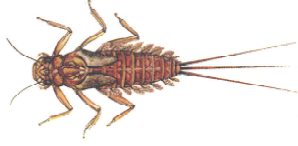


# Hīti Tautuhi Pepeke

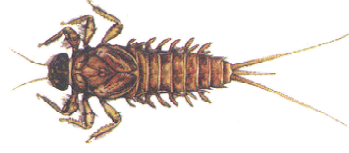


greater WELLINGTON  
THE REGIONAL COUNCIL

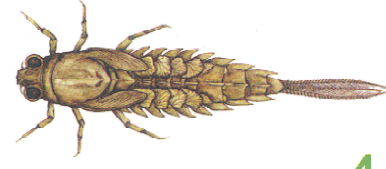
piriwai



4

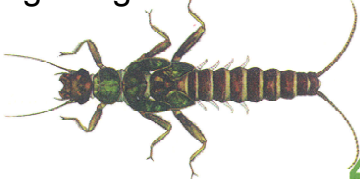


4

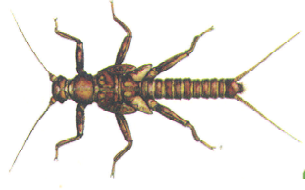


4

ngarongaro wai nunui



4



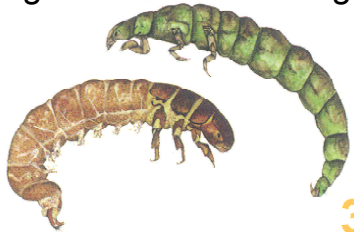
4

ngarongaro wai iti



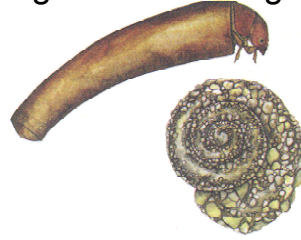
2

ngaro waiwai kore anga



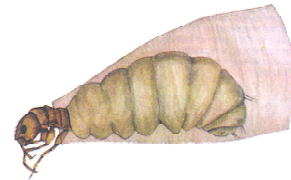
3

ngaro waiwai anga



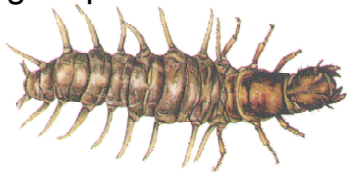
3

ngaro waiwai koeko



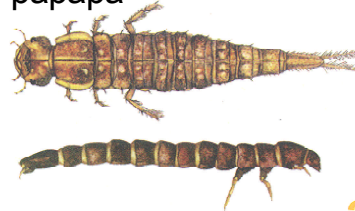
1

ngaro parirau



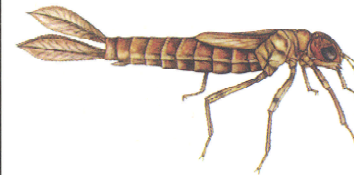
3

pāpapa



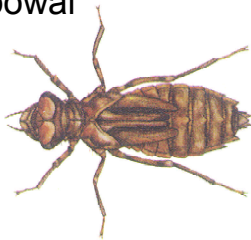
2

kihitarā



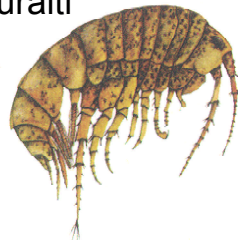
2

kapowai



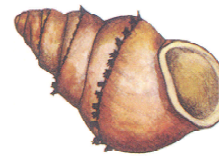
2

kouraiti



2

ngata



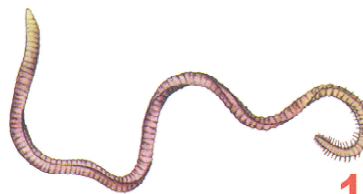
1

hoehoe tuarā



1

toke



1

ngaro



1

He mea tā ēnei whakaahua nā te atawhai a Karen Mason

