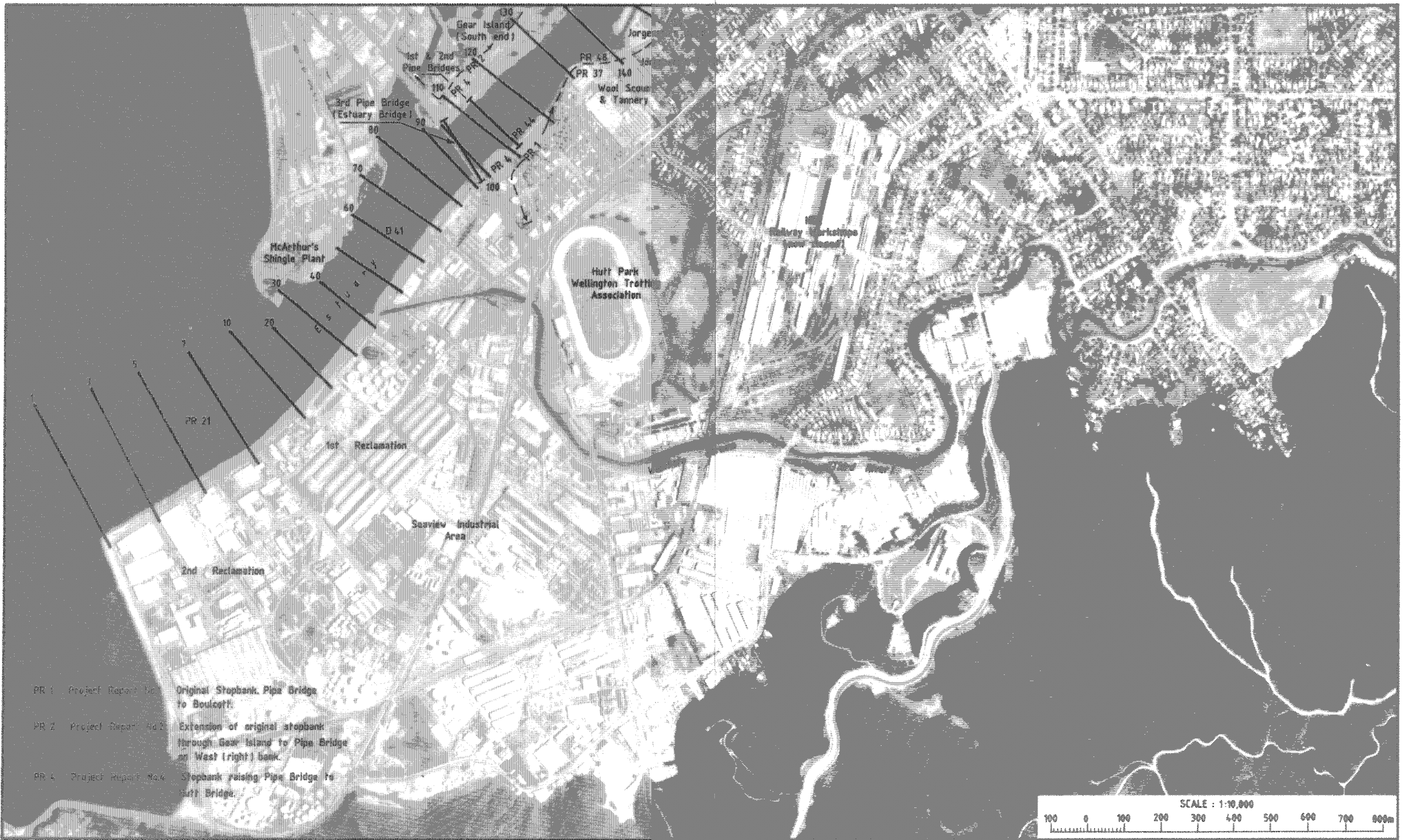


# **APPENDIX A**

## **LOCATION OF HISTORICAL WORKS**



- PR 1 Project Report No. 1 Original Stopbank, Pipe Bridge to Boulcott.
- PR 2 Project Report No. 2 Extension of original stopbank through Gear Island to Pipe Bridge on West (right) bank.
- PR 4 Project Report No. 4 Stopbank raising Pipe Bridge to Hutt Bridge.



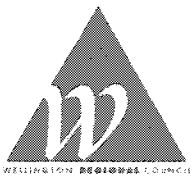
**KEY**

— 230  
Line & number indicates the position of current (1985) river cross sections. Refer WRC plans

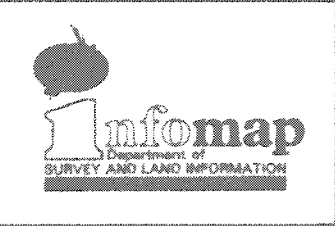
**ALPHANUMERIC CODE**  
Codes PR 12 indicate the approximate location of works referred to in the archive tables. Refer to archive table index, in table of contents.

**PLACE NAMES**  
Place names are those used by the Hutt River Board to identify reaches of the river as referred to within the archives.

**SHEET 1**  
**HUTT CITY**  
**The Estuary**



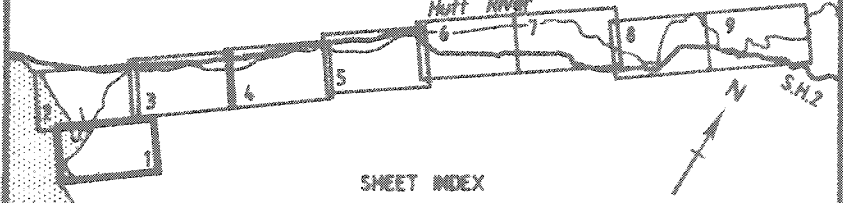
Photographic base from DOSLI and N.Z. Aerial Mapping.  
Map and data Copyright Wellington Regional Council.




**Catchment Engineering**  
CONSULTING ENGINEERS  
Phone (04) 686 926 Fax (04) 686 286

**HUTT RIVER FLOOD CONTROL SCHEME REVIEW 1990**  
**LOCATION OF HISTORICAL WORKS**

Figure 2  
Appendix A



**RECTIFIED PHOTO SHEET**  
The photobase is a half-tone enlargement. A best mean fit has been obtained from scaling data. The photographic image is not orthogonal and some displacement of image may occur as a result of differences in ground elevations.  
Aerial Photography SN 8457 Flown 28/1/85



- PR 1 Project Report No.1 Original stopbank Pipe Bridge to Boudcott
- PR 2 Project Report No.2 Extension of original stopbank through Gear Island to Pipe Bridge on West (right) bank
- PR 3 Project Report No.3 Stopbank raising east (left) bank only at Moera
- PR 4 Project Report No.4 Stopbank raising Pine Bridge to Hutt Bridge
- PR 5 Project Report No.5 Stopbank raising Ewen Bridge to Melling

— 230

Line & number indicates the position of current (1985) river cross sections. Refer WRC plans

ALPHANUMERIC CODE

Codes PR 12 indicate the approximate location of works referred to in the archive tables. Refer to archive table index, in table of contents.

**KEY**


**PLACE NAMES**

Place names are those used by the Hutt River Board to identify reaches of the river as referred to within the archives.

SHEET 2

HUTT CITY

Petone to Lower Hutt Central



Photographic base from DOSLI and N.Z. Aerial Mapping.  
Map and data Copyright Wellington Regional Council.



Department of SURVEY AND LAND INFORMATION

**Catchment Engineering**

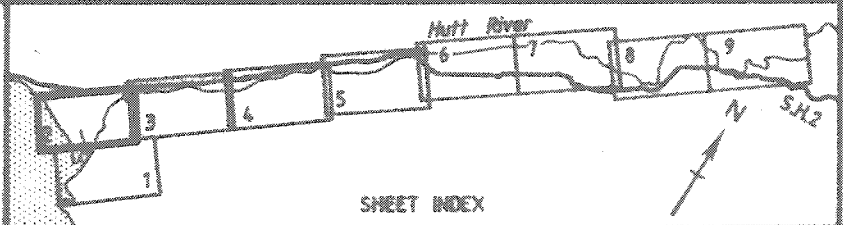
CONSULTING ENGINEERS

Phone (04) 886 928 Fax (04) 889 288

**HUTT RIVER FLOOD CONTROL SCHEME REVIEW 1990**

**LOCATION OF HISTORICAL WORKS**

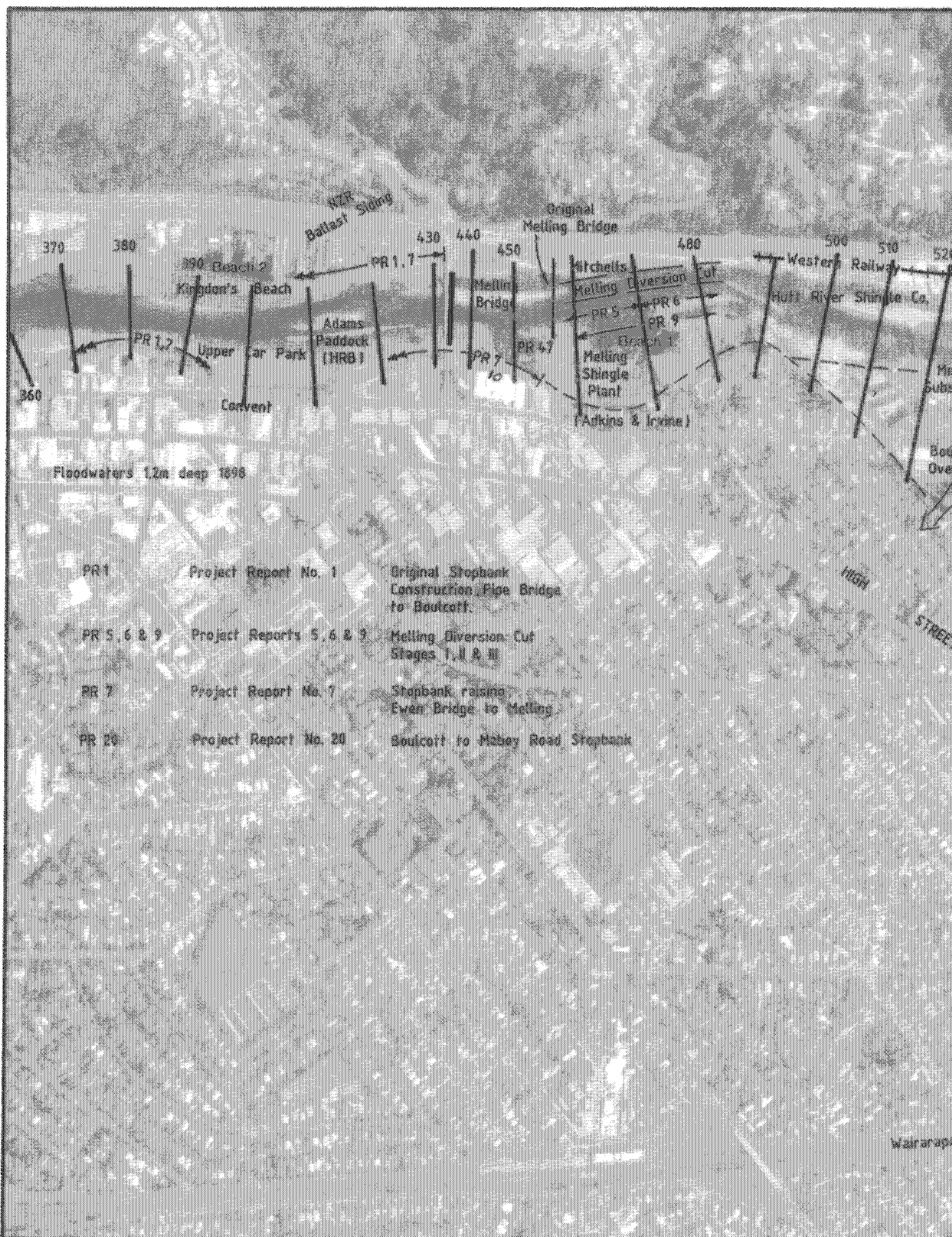
Figure 3  
Appendix A



**RECTIFIED PHOTO SHEET**

The photobase is a halftone enlargement. A best mean fit has been obtained from scaling data. The photographic image is not orthogonal and some displacement of image may occur as a result of differences in ground elevations.

Aerial Photography SN 84.57 Flown 28/1/85



**KEY**

— 230  
Line & number indicates the position of current (1985) river cross sections. Refer WRC plans

ALPHANUMERIC CODE  
Codes PR 12 indicate the approximate location of works referred to in the archive tables. Refer to archive table index, in table of contents.

**PLACE NAMES**  
Place names are those used by the Hutt River Board to identify reaches of the river as referred to within the archives.

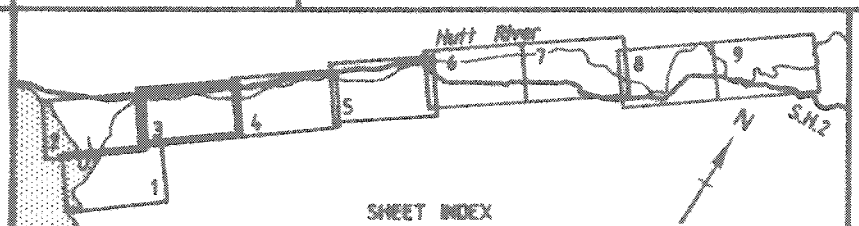
SHEET 3  
HUTT CITY  
Melling to Avalon

Photographic base from DOSLI and N.Z. Aerial Mapping.  
Map and data Copyright Wellington Regional Council.

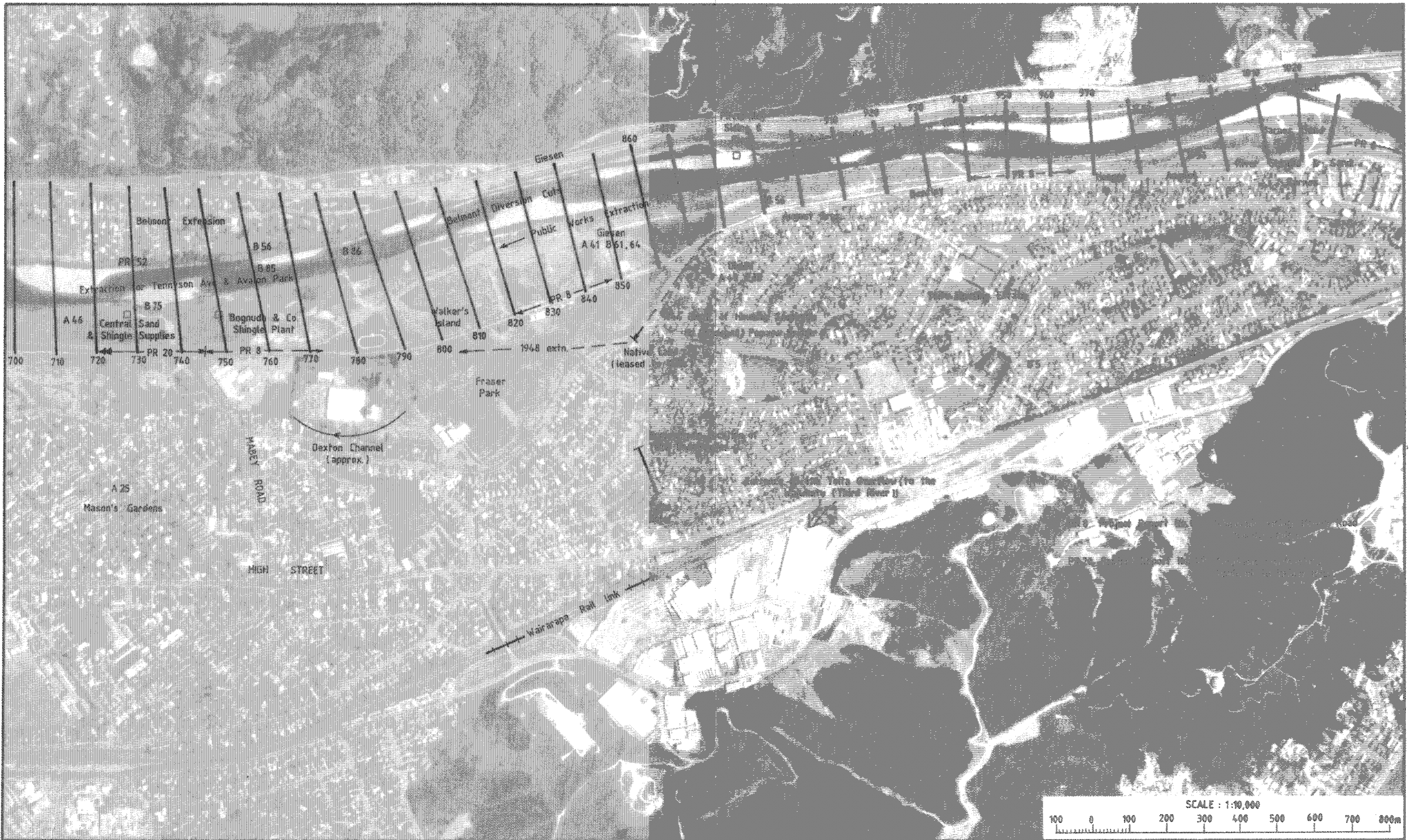
Infomap  
Department of SURVEY AND LAND INFORMATION

**Catchment Engineering**  
CONSULTING ENGINEERS  
Phone (04) 686 926 Fax (04) 689 288

**HUTT RIVER FLOOD CONTROL SCHEME REVIEW 1990**  
**LOCATION OF HISTORICAL WORKS**



**RECTIFIED PHOTO SHEET**  
The photobase is a half-tone enlargement. A best mean fit has been obtained from scaling data. The photographic image is not orthogonal and some displacement of image may occur as a result of differences in ground elevations.  
Aerial Photography SN 8457 Flown 28/1/85



**KEY**

— 230  
 Line & number indicates the position of current (1985) river cross sections. Refer WRC plans  
 ALPHANUMERIC CODE  
 Codes PR 12 indicate the approximate location of works referred to in the archive tables. Refer to archive table index, in table of contents.

PLACE NAMES  
 Place names are those used by the Hutt River Board to identify reaches of the river as referred to within the archives.

SHEET 4  
 HUTT CITY  
 Taita



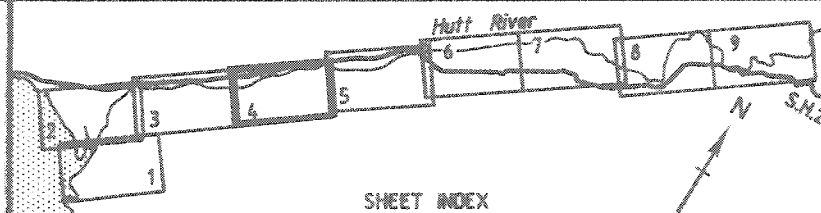
Photographic base from DOSLI and N.Z. Aerial Mapping.  
 Map and data Copyright Wellington Regional Council.



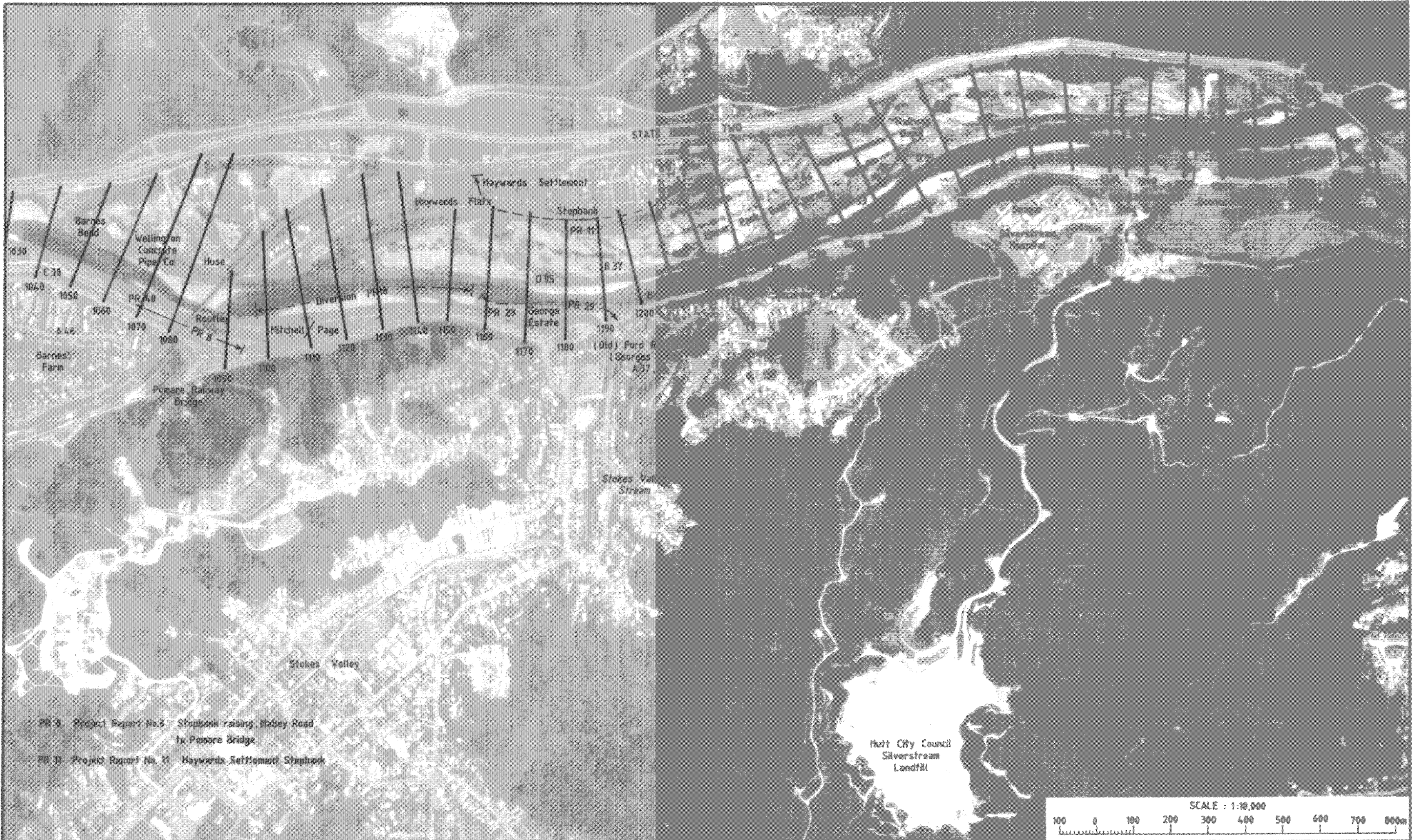
**Catchment Engineering**  
 CONSULTING ENGINEERS  
 Phone (04) 686 926 Fax (04) 689 288

**HUTT RIVER FLOOD CONTROL SCHEME REVIEW 1990**  
**LOCATION OF HISTORICAL WORKS**

Figure 5  
 Appendix A



RECTIFIED PHOTO SHEET  
 The photobase is a half-tone enlargement. A best mean fit has been obtained from scaling data. The photographic image is not orthogonal and some displacement of image may occur as a result of differences in ground elevations.  
 Aerial Photography SN 8457 Flown 26/1/85




**KEY**

— 230  
Line & number indicates the position of current (1985) river cross sections. Refer WRC plans


**ALPHANUMERIC CODE**  
Codes PR 12 indicate the approximate location of works referred to in the archive tables. Refer to archive table index, in table of contents.

**PLACE NAMES**  
Place names are those used by the Hutt River Board to identify reaches of the river as referred to within the archives.

SHEET 5  
HUTT CITY  
Taita Gorge



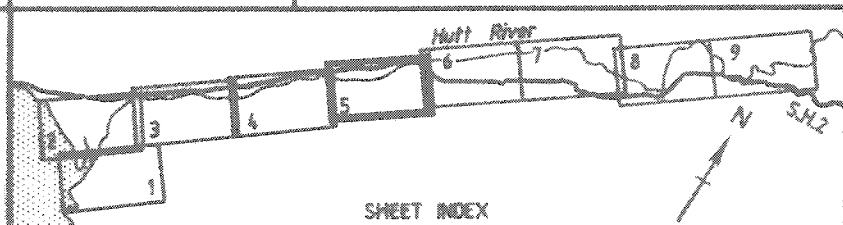
Photographic base from DOSLI and N.Z. Aerial Mapping.  
Map and data Copyright Wellington Regional Council.



Department of SURVEY AND LAND INFORMATION

**Catchment Engineering**  
CONSULTING ENGINEERS  
Phone (04) 686 926 Fax (04) 686 288

**HUTT RIVER FLOOD CONTROL SCHEME REVIEW 1990**  
**LOCATION OF HISTORICAL WORKS**



**RECTIFIED PHOTO SHEET**  
The photobase is a half-tone enlargement. A best mean fit has been obtained from scaling data. The photographic image is not orthogonal and some displacement of image may occur as a result of differences in ground elevations.  
Aerial Photography SN 0457 Flown 28/1/85



- PR 13 Project Report No.13 Whakafiki Street to Heretaunga Golf Club Stopbanking
- PR 16 Project Report No.16 Channel Realignment between Trentham Memorial Park and Silverstream Bridge The Silverstream Cut
- PR 45 Project Report No.45 Upper Hutt Bypass River Works

**KEY**

— 230  
 Line & number indicates the position of current (1985) river cross sections. Refer WRC plans  
 ALPHANUMERIC CODE  
 Codes PR 12 indicate the approximate location of works referred to in the archive tables. Refer to archive table index, in table of contents.

**PLACE NAMES**  
 Place names are those used by the Hutt River Board to identify reaches of the river as referred to within the archives.

**SHEET 6**  
**UPPER HUTT CITY**  
 Silverstream to Barton's Bush



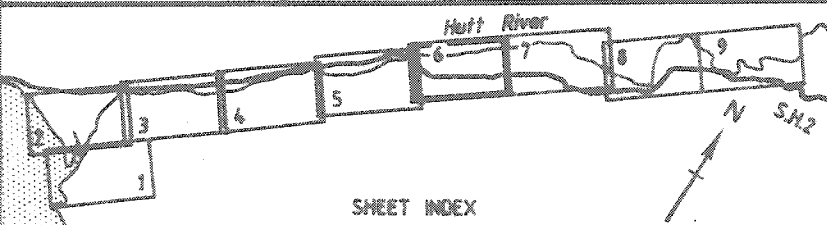
Overlay produced from WREGGIS Database by C Strachan Land Resources Dept. Photographic base from DOSLI and N.Z. Aerial Mapping. Map and data Copyright Wellington Regional Council.



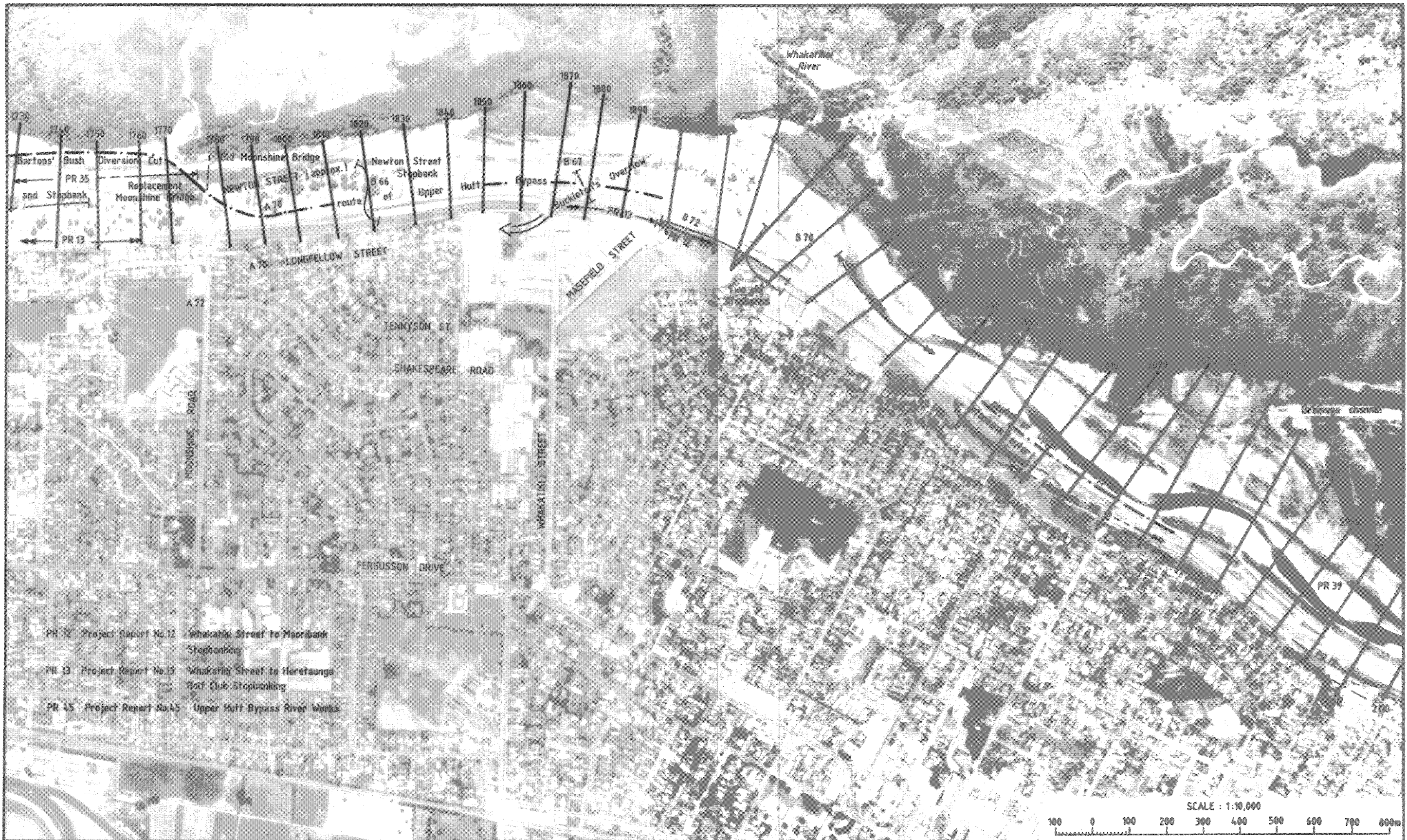
**Catchment Engineering**  
 CONSULTING ENGINEERS  
 Phone (04) 688 926 Fax (04) 689 286

**HUTT RIVER FLOOD CONTROL SCHEME REVIEW 1990**  
**LOCATION OF HISTORICAL WORKS**

Figure 7  
 Appendix A



**ORTHOPHOTO SHEET**  
 This orthophotomap is a differentially rectified aerial photo, the photo detail conforms to normal mapping accuracies.  
 Level Datum: Wellington Datum 1953  
 New City Datum (M.S.L. 0)  
 Orthophoto from Aerial Survey No. SN 8909 Flown 16/1/88.




**KEY**

— 230  
Line & number indicates the position of current (1985) river cross sections. Refer WRC plans

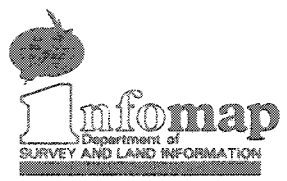
**ALPHANUMERIC CODE**  
Codes PR indicate the approximate location of works referred to in the archive tables. Refer to archive table index, in table of contents.

**PLACE NAMES**  
Place names are those used by the Hutt River Board to identify reaches of the river as referred to within the archives.


**SHEET 7**  
**UPPER HUTT CITY**  
Moonshine to Totara Park



Photographic base from DOSLI and N.Z. Aerial Mapping.  
Map and data Copyright Wellington Regional Council.

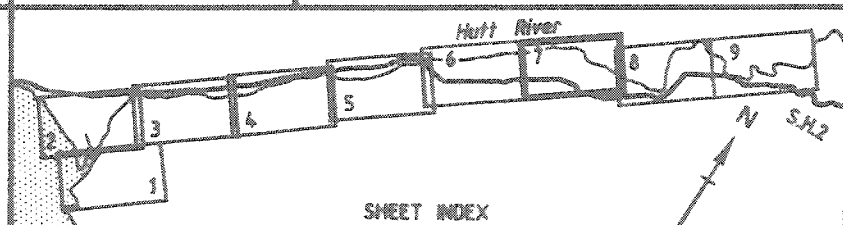


Department of SURVEY AND LAND INFORMATION



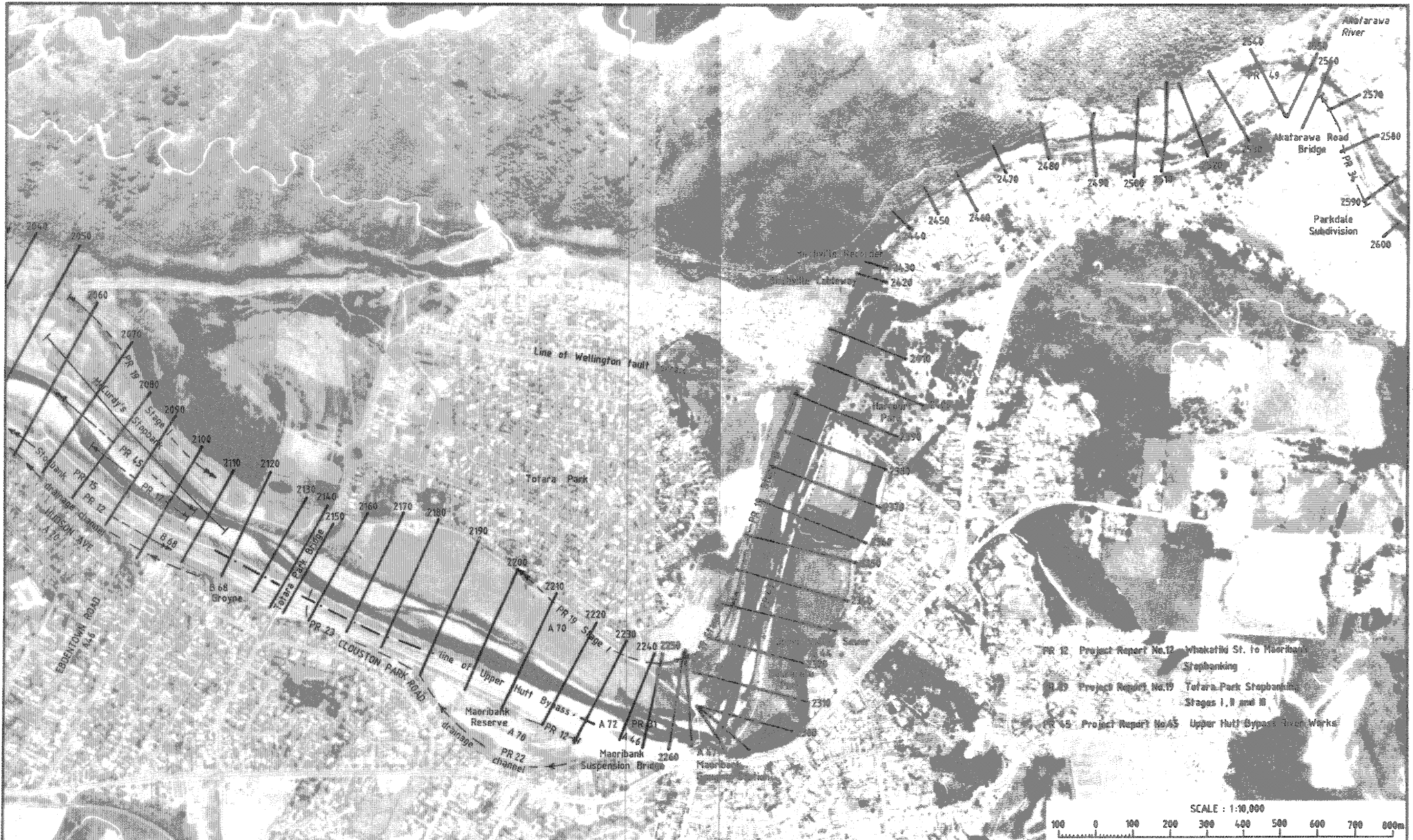
**Catchment Engineering**  
CONSULTING ENGINEERS  
Phone (04) 686 926 Fax (04) 689 288

**HUTT RIVER FLOOD CONTROL SCHEME REVIEW 1990**  
**LOCATION OF HISTORICAL WORKS**

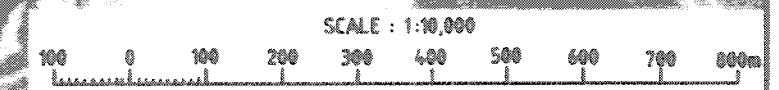


**ORTHOPHOTO SHEET**  
This orthophotomap is a differentially rectified aerial photo, the photo detail conforms to normal mapping accuracies.  
Level Datum: Wellington Datum 1953  
New City Datum (M.S.L. 0)  
Orthophoto from Aerial Survey No. SN 0909 Flown 16/1/88.





- PR 12 Project Report No.12 Whakatiki St. to Maoribank Stopbanking
- PR 19 Project Report No.19 Totara Park Stopbanking Stages I, II and III
- PR 45 Project Report No.45 Upper Hutt Bypass River Works



**KEY**

— 230  
Line & number indicates the position of current (1985) river cross sections. Refer WRC plans

**ALPHANUMERIC CODE**  
Codes PR 12 indicate the approximate location of works referred to in the archive tables. Refer to archive table index, in table of contents.

**PLACE NAMES**  
Place names are those used by the Hutt River Board to identify reaches of the river as referred to within the archives.

SHEET 8  
UPPER HUTT CITY  
Maoribank

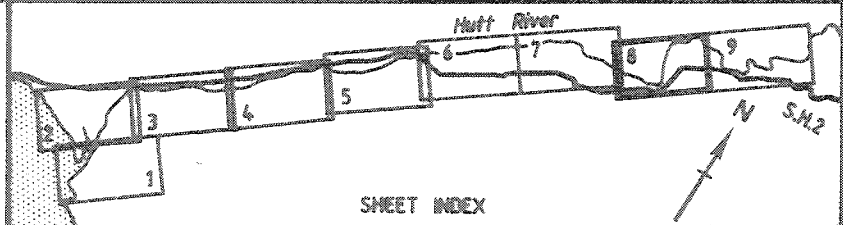
Photographic base from DOSLI and N.Z. Aerial Mapping.  
Map and data Copyright Wellington Regional Council.

Department of SURVEY AND LAND INFORMATION

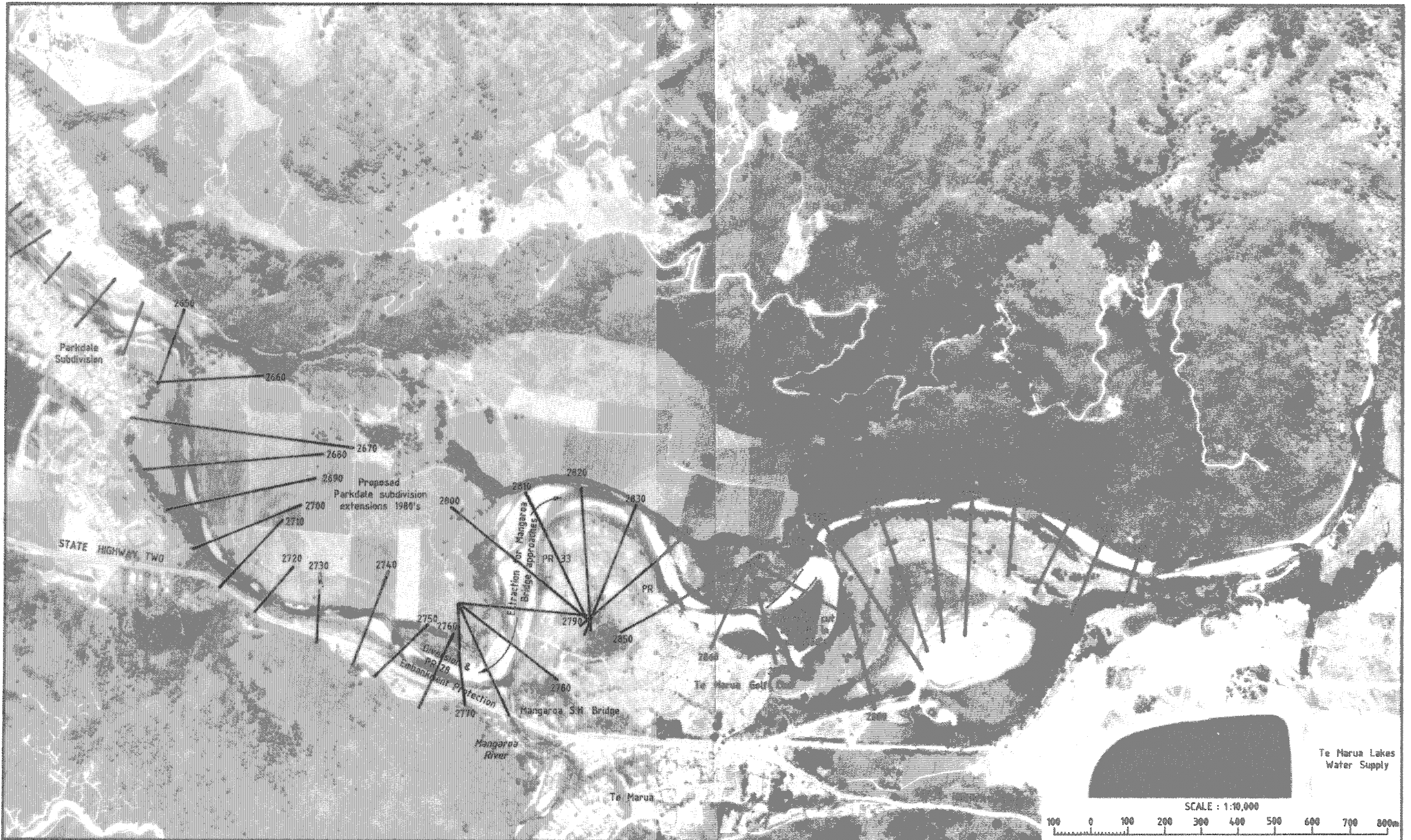
**Catchment Engineering**  
CONSULTING ENGINEERS  
Phone (04) 886 926 Fax (04) 889 286

**HUTT RIVER FLOOD CONTROL SCHEME REVIEW 1990**  
**LOCATION OF HISTORICAL WORKS**

Figure 9  
Appendix A



**ORTHOPHOTO SHEET**  
This orthophotomap is a differentially rectified aerial photo, the photo detail conforms to normal mapping accuracies.  
Level Datum: Wellington Datum 1953  
New City Datum (M.S.L. 0)  
Orthophoto from Aerial Survey No. SM 8909 Flown 16/1/88.




**KEY**

— 230  
Line & number indicates the position of current (1985) river cross sections. Refer WRC plans

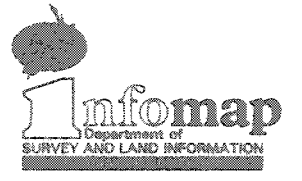
**ALPHANUMERIC CODE**  
Codes PR 12 indicate the approximate location of works referred to in the archive tables. Refer to archive table index, in table of contents.

**PLACE NAMES**  
Place names are those used by the Hutt River Board to identify reaches of the river as referred to within the archives.


SHEET 9  
UPPER HUTT CITY  
Parkdale to  
Te Marua



Photographic base from DOSLI and M.Z. Aerial Mapping.  
Map and data Copyright Wellington Regional Council.

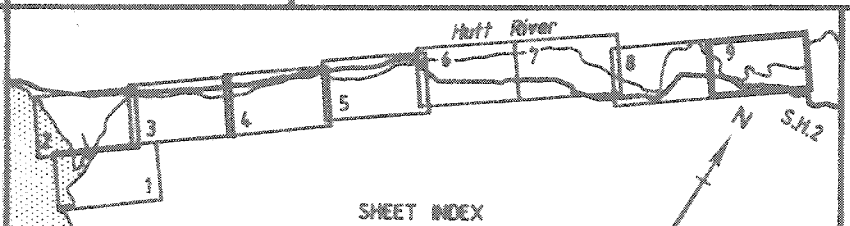


Department of SURVEY AND LAND INFORMATION



**Catchment Engineering**  
CONSULTING ENGINEERS  
Phone (04) 686 926 Fax (04) 686 288

**HUTT RIVER FLOOD CONTROL SCHEME REVIEW 1990**  
**LOCATION OF HISTORICAL WORKS**



**ORTHOPHOTO SHEET**  
This orthophotomap is a differentially rectified aerial photo, the photo detail conforms to normal mapping accuracies.

Level Datum: Wellington Datum 1953  
New City Datum (M.S.L. 0)

Orthophoto from Aerial Survey No. SN 8909 Flown 16/1/88.